



Cavendish Close Infant and Nursery School

# Newsletter 8

Monday 7<sup>th</sup> March 2022

Wood Road  
Chaddesden  
Derby  
DE21 4LY

662239

Dear Parents and Carers,

I am delighted to share the outcome of the recent Ofsted inspection of Cavendish Close Junior Academy with you – The Junior School is a Good School. They achieved a Good outcome in all the areas that were inspected – Leadership and Management, Quality of Education, Behaviour and Attitudes and Personal Development. This is fabulous news. I will share a letter from Mrs Tague and the report with you tomorrow.

If you have any queries or feedback, please get in touch so that we can work together to make our school the best it can be for our community. If you have a concern, we will deal with it properly and work in partnership with you to secure a positive outcome. Thank you for your positivity, support and understanding – it is appreciated. Take care.

Kind regards, *Mrs C Diffin* Headteacher

## We would like to make you aware of what your children will be learning this half term...

New Nursery Topic	What's outside with the hungry caterpillar?	<a href="#">Link 1</a> <a href="#">Link 2</a>
New Reception Topic	Who lives in a place like this?	<a href="#">Link</a>
New Year 1 Topic	How does your garden grow?	<a href="#">Link</a>
New Year 2 Topic	How does it grow?	<a href="#">Link</a>

If you have any questions about your child's learning or progress, please talk to your child's teacher.

If your child is absent from school but well enough to access remote education, please click on your child's year group home learning plan to keep your child learning at home.

This will help your child to 'keep up' with their friends in school.

Our plans are changed every half term and they reflect the learning that will be happening in school.

Nursery	<a href="#">Link</a>	If you have any questions about your child's learning or progress, please talk to your child's teacher.
Reception	<a href="#">Link</a>	
Year 1	<a href="#">Link</a>	
Year 2	<a href="#">Link</a>	

Cavendish Close  
Infant School (CCIS)

## Our School Vision

When our children  
move on from us,  
we want them to  
be:



# Dear Cavendish Close Children,



You all looked so wonderful in your pyjamas on World Book Day last Thursday. I know that you had a fun bedtime reading day in your class. Who was your mystery reader?

I am so proud of the good behaviour choices that you all make at school every day. We had a visitor in school last week and she said our school is a calm and happy place for children to learn.



Eating a healthy meal every dinner time is important for our health. Staying hydrated by drinking water will keep our brains working all day.

# Best wishes from Mrs Diffin x



### **Non-uniform Charity Day – Friday 18<sup>th</sup> March**

On Friday 18<sup>th</sup> March, children can come to school in their own clothes in exchange for bringing in a cash charity donation.

We have decided to change the charity we are supporting for a very good reason. Instead of supporting Comic Relief this year, we will be supporting the **Little Princess Trust**. This is because we have our own Little Princess in Reception who is doing something wonderful for a special charity and we would like to support her with her extraordinary act of kindness.

The Little Princess Trust provide real hair wigs, free of charge to children and young people who have lost their own hair through cancer treatment and other conditions. The charity also gives grants towards research projects focussed on finding kinder and more effective treatments for childhood cancers.

Mrs Carter and the kitchen team will be baking biscuits for the children to enjoy at snack time with their fruit. Please be generous and give what you can to this great charity.

Our Little Princess is Tilly from Class 2. Tilly has beautiful long hair, but she has decided it's time for a change and she would like shorter hair. Tilly has decided that she would like to donate her hair to the Little Princess Trust charity. She knows that her hair will be used to make someone else feel happy. Tilly is due to have her hair cut on Saturday 19<sup>th</sup> March.

**Tilly – You are such a kind girl; we are extremely proud of what you are doing. What a star you are!**

Here is a link to Tilly's 'just giving' page if you would like to donate online:

<https://www.justgiving.com/fundraising/jessica-may12>



**Friday 18<sup>th</sup> March**  
**Non-uniform day in exchange for  
a charity donation.**

Support our Tilly and the  
Little Princess Trust Charity.

**Please give what you can.**



**Thank you.**



### **Communication with parents and carers**

Thank you for 'keeping up' with communication from school. We will continue to give you sufficient notice of all key dates – please see the back of every newsletter.

The majority of communication will continue to be electronic. If you would prefer paper copies of our newsletters, please ask your child's class teacher.

If you have the Teachers 2 Parents app, you can manage your notifications. All communication will be in the app so that you can 'catch up' at a convenient time.

If you do not have the Teachers 2 Parents app, you will receive text messages.

If you require paper copies of any of our communication, please let us know.

We are increasingly asked to share Derby City Council 'community opportunities' with our families. Some of this information will be of interest to you and some won't. There seems to be lots of great community experiences for children on offer at the moment. This is to support children's personal development after periods of lockdown and social restrictions.

Family life is busy again as we have all learnt to live with COVID. My daughters are currently accessing an urban choir, piano lessons, netball training and matches (three times a week), kickboxing and puppy training.



### Safety in the community and on school premises

The new crossing has now been completed on Wood Road. Thank you for your patience last week, the temporary traffic lights caused challenges that again relied on slow and respectful driving.

Polite reminder: Please park safely away from school and walk with your child if you need to travel by car. You must not mount pavements, block driveways or park on junctions. Allow sufficient time to find a safe and respectful parking space in the community. Thank you.

Polite reminder: For parents and carers who drive on site for any reason – You must drive very slowly. Park considerately and keep your vehicles off our paths and grassed areas. Thank you.

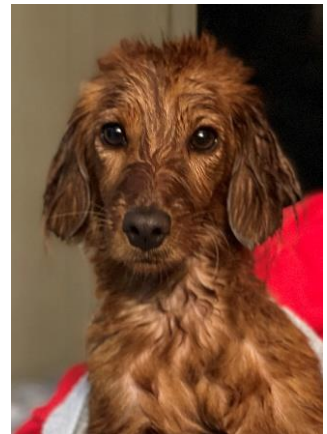
Thank you to all the parents and carers who are great role models for our children every day. Keeping everyone safe will always be our priority.



### Therapy / Nurture Dog

Mrs Orme is currently exploring the possibility of a therapy / nurture dog visiting school to support children's personal development. We will be sharing more information with you soon and asking you to share information with us about any allergies and/or fears. We are currently working our way through best practice guidance and completing a risk assessment.

My puppy Nelly Tiger is now 9 months old. She has completed the Kennel Club Puppy Foundation Good Citizen Dog Scheme Bronze Award. She is such a cuddly bundle of playful fun! Here is a photograph of her after my youngest daughter Tabitha gave her a pamper shower!



### Keeping children Safe

The best interests of children continue to come first for our Safeguarding Team.

**Keeping children safe from harm is our utmost priority.**

**If anyone feels concerned about the safety of a child, they should act on their concern immediately.**

- Parents and carers can email the Safeguarding team to make an enquiry, to ask for help or to share information: [safeguarding@cavclosei.derby.sch.uk](mailto:safeguarding@cavclosei.derby.sch.uk)
- **Parents and carers can ring Derby Children's Social Care directly 01332 641172 (Out of hours Careline 01332 786968) to report concerns first hand.**
- Parents and carers can use the NSPCC helpline 0808 800 5000.

#### **The Safeguarding Team**

*Mrs Diffin*

Headteacher and Designated Safeguarding Lead

*Mrs Howett*

Deputy Headteacher and Deputy Designated Safeguarding Lead

*Mrs Asghar*

Assistant Headteacher and Deputy Designated Safeguarding Lead

*Mrs Vincett*

Inclusion Leader and Safeguarding Champion

*Mrs Leadbeater*

Learning Mentor and Safeguarding, Attendance and Behaviour Champion

*Mrs Dearie*

Higher Level Teaching Assistant and Safeguarding and Behaviour Champion



## Our School Behaviour Values

These are the behaviours we value the most at our school.

Every day in school we teach and model these values. Children practise these values and they are rewarded for making good behaviour choices.

Children's behaviour at our school is good.

Miss Luke is our Behaviour and Attitudes Leader.

We would like to share our Behaviour Policy with you...

[Link](#)



We support a number of children with identified social, emotional and mental health needs in school. Most of these children have special educational needs and many have a medical diagnosis. We have significant expertise in working with families and external agencies to enable these children to succeed and make progress. We are an Autism Spectrum Disorder (ASD) and Attention Deficit and Hyperactivity Disorder (ADHD) friendly school. All behaviour is communication.

Kind hands

Kind feet

Kind words



### Coronavirus Update

We are moving into a new phase in managing the COVID-19 pandemic. However, the number of people infected in our community remains high and some people are still at risk of serious illness from infection. The pandemic is not yet over.

For the month of March testing is still available and guidance remains to **stay at home and take a test if you have symptoms**. PCR testing sites remain open, and tests can still be ordered online. **If your child tests positive for COVID-19 they should stay at home for at least 5 days and use lateral flow tests on days 5 and 6 to check if they are able to return to school**. The only change is that this is no longer a law, it is now guidance. Lateral flow device tests are still available for free during March, from April this will end for most of us; currently you can still pick them up from local pharmacies and order them online. Guidance has changed, we are no longer advised to test twice a week, but we are still advised to use these tests to reduce risks to others; for example, before seeing elderly relatives or those in poor health. Please remember the simple things that we can all do to reduce spread of COVID-19 and other viruses:

- Keep up to date with vaccinations when offered.
- Open windows or meet outside.
- Wear a face covering, if you can, if you are in crowded indoor areas.
- Wash your hands regularly and cover your coughs and sneezes.
- Avoid vulnerable people if you are unwell

Early Years Foundation Stage Leader: Mrs Howett		
Nursery		
Nursery	<b>Mrs Howett, Mrs Brown, Mrs Bonner, Mrs Bee, Mrs Roberts</b>	Happy Hedgehogs
Reception		
Class 1	<b>Mrs Carter, Mrs Gadsby</b>	Sociable Squirrels
Class 2	<b>Miss Brown, Miss Cunliffe</b>	Bold Butterflies
Class 3	<b>Mrs Orme, Mrs Birkinshaw</b>	Curious Caterpillars

Key Stage 1 Leader: Mrs Asghar		
Year 1		
Class 4	<b>Miss Doxey, Mrs Edwards</b>	Flexible Foxes
Class 5	<b>Mrs Merriman, Mrs Hemmings, Mrs Taylor</b>	Determined Dragonflies
Class 6	<b>Miss Marley, Mrs Mills</b>	Respectful Robins
Year 2		
Class 7	<b>Miss Luke, Mrs Redfern</b>	Brave Badgers
Class 8	<b>Mrs Asghar, Miss Flynn, Miss Richardson</b>	Resilient Rabbits
Class 9	<b>Miss Harker, Miss Stafford</b>	Dynamic Deers

*Mrs Roberts, Mrs Smalley, Mrs Leadbeater and Mrs Dearie will continue to support classes and children in all year groups.*

School Day Timings			
In Nursery, we offer full time (30 hour) and part time (15 hour) places. Part time places are offered at the beginning or the end of the week			
<u>Beginning of the week:</u> Monday and Tuesday (full days) and Wednesday morning.		<u>End of the week:</u> Wednesday afternoon and Thursday and Friday (full days).	
	Door opens	Registration	Home Time
<b>Nursery Full Days</b>	8:45am	8:50am	2:50am
<b>Wednesday Morning Half Day</b>	8:45am	8:45am	11:45am
<b>Wednesday Afternoon Half Day</b>	12:10pm	12:10pm	3:10pm

	Doors open	Morning Registration	Home Time
<b>Reception</b>	8:45am	8:55am	2:55pm
<b>Year 1</b>	8:45am	9:00am	3:00pm
<b>Year 2</b>	8:45am	9:05am	3:05pm

Please ensure that your child is an <b>Attendance HERO</b>			
<b>H</b>	<b>E</b>	<b>R</b>	<b>O</b>
<b>Here</b>	<b>Every day,</b>	<b>Ready and</b>	<b>On time</b>

<b>Breakfast Club</b>	From 7:45am
<b>After School Club</b>	Until 5:45pm
Mrs Roberts is our Breakfast and After School Club Leader. Miss Stafford is our After School Club Lead Teaching Assistant. If you need help with childcare before or after the school day, please enquire about our fantastic provision by emailing Mrs Roberts. <a href="mailto:Clubs@cavclosei.derby.sch.uk">Clubs@cavclosei.derby.sch.uk</a>	

## Spring 2022 Key Stage 1 Clubs

We are continuing to rebuild our after school club offer to support children's broader development beyond the school day.





Our club offer is open to all Key Stage 1 children and we are hoping to encourage and inspire children to discover and develop their talents and interests.

In the Summer term, we plan to broaden our offer to enable Reception children to join clubs.

### Clubs led by external providers, supported by school staff



**These clubs are open to children in Year 1 and Year 2**



**Places are available and will be filled on a first come, first served basis. Parents and carers need to follow the instructions on the letter/flyer from the external providers to secure places.**

	<a href="#"><u><b>Rock Steady Club</b></u></a>	Monday afternoons during school time or after school in the hall	Rock Steady Band Leader	Click on the club's name to access further information and to secure a place.
	<a href="#"><u><b>Football Club</b></u></a>	Tuesdays until 4:00pm in the hall	Elite Football Development Coach (EFD) Supported by Miss Richardson	Click on the club's name to access further information and to secure a place.
	<a href="#"><u><b>Dodgeball Club</b></u></a>	Wednesdays until 4:00pm in the hall	Elite Football Development Coach (EFD) Supported by Miss Knapton	Click on the club's name to access further information and to secure a place.
	<a href="#"><u><b>Basketball Club</b></u></a>	Thursdays until 4:00pm in the hall	Elite Football Development Coach (EFD) Supported by Mrs Redfern	Click on the club's name to access further information and to secure a place.
	<a href="#"><u><b>Jumping Clay Club</b></u></a>	Thursdays until 4:10pm in Class 9	Jumping Clay Instructor Supported by Miss Flynn	Click on the club's name to access further information and to secure a place.

### Year 1 Clubs led by school staff

**These clubs are open to Year 1 children**

	<b>Cheerleading Club</b>	Thursdays until 4:00 in Class 2	Led by Miss Brown and Miss Cunliffe	Thursday 10.2.22 to 7.4.22 (8 sessions)	£12 in total
	<b>Art Club</b>	Fridays until 4:00pm in Class 9	Led by Mrs Roberts and Mrs Smalley	Friday 11.2.22 to 8.4.22 (7 sessions)	£14 in total

Year 2 Clubs led by school staff					
These clubs are open to Year 2 children					
	<b>Numbots Club</b>	Wednesdays until 4:00pm in Class 5	Led by Mrs Hemmings and Mrs Taylor	Wednesday 9.2.22 to 6.4.22 (8 sessions)	£12 in total
	<b>Dance Club</b>	Fridays until 4:00pm in the hall	Led by Miss Richardson and Miss Flynn	Friday 11.2.22 to 8.4.22 (7 sessions)	£10.50 in total



### **Contacting School**

Telephone 01332 662239

Please share any queries or concerns with us so that we can work together to keep your children safe, happy, and learning at school. Feedback and suggestions are always welcome.

#### **Senior Leadership Team**

[leadership@cavclosei.derby.sch.uk](mailto:leadership@cavclosei.derby.sch.uk)

(Mrs Diffin - Headteacher, Mrs Howett - Deputy Headteacher and Early Years Foundation Stage Leader, Mrs Asghar - Assistant Headteachers and Key Stage 1 Leader)

#### **School Office Team**

[admin@cavclosei.derby.sch.uk](mailto:admin@cavclosei.derby.sch.uk)

(Mrs Kelly, Mrs Manners and Mrs Gibson)

#### **Safeguarding Team**

[safeguarding@cavclosei.derby.sch.uk](mailto:safeguarding@cavclosei.derby.sch.uk)

(Mrs Diffin, Mrs Howett, Mrs Asghar, Mrs Vincett, Mrs Leadbeater, Mrs Dearie)

#### **Inclusion Leader**

[senco@cavclosei.derby.sch.uk](mailto:senco@cavclosei.derby.sch.uk)

(Mrs Vincett) Mrs Vincett is our Special Educational Needs Coordinator (SENCO)

#### **Year Group Class Teachers**

[nursery@cavclosei.derby.sch.uk](mailto:nursery@cavclosei.derby.sch.uk)

(Mrs Howett)

[reception@cavclosei.derby.sch.uk](mailto:reception@cavclosei.derby.sch.uk)

(Mrs Carter, Miss Brown, Mrs Orme)

[year1@cavclosei.derby.sch.uk](mailto:year1@cavclosei.derby.sch.uk)

(Miss Doxey, Mrs Merriman, Miss Marley)

[year2@cavclosei.derby.sch.uk](mailto:year2@cavclosei.derby.sch.uk)

(Mrs Luke, Mrs Asghar, Miss Harker)

#### **Breakfast Club and After School Club**

(Mrs Roberts)

[clubs@cavclosei.derby.sch.uk](mailto:clubs@cavclosei.derby.sch.uk)



<b>Key Dates</b>	
<b><u>Spring Term 2</u></b>	
Monday 28 <sup>th</sup> February 2022 to Friday 8 <sup>th</sup> April 2022	
Week beginning 7 <sup>th</sup> March	Key Stage 1 Parents' Evening Phone calls
March	Children with Special Educational Needs will have their Support Plans reviewed. New targets will be shared with parents and carers.
Week beginning Monday 14 <sup>th</sup> March	British Science Week
Friday 18 <sup>th</sup> March	Non-uniform Charity Fun Day
Tuesday 22 <sup>nd</sup> March – Tuesday 29 <sup>th</sup> March	Scholastic book fair (Further information to follow from the Literacy Team)
Wednesday 30 <sup>th</sup> March & Thursday 31 <sup>st</sup> March	Photographer in school for individual and 'in school' sibling photographs.
Monday 4 <sup>th</sup> April	Rock Steady Concert
Tuesday 5 <sup>th</sup> April	Reception going to the National Adventure Farm
Wednesday 6 <sup>th</sup> April	St Mary's Church team visiting for an Easter assembly
<b><u>Summer Term 1</u></b>	
Monday 25 <sup>th</sup> April 2022 to Friday 27 <sup>th</sup> May 2022	
May	Year 2 children will be assessed using the statutory National Curriculum tests
Monday 2 <sup>nd</sup> May	Bank Holiday: School is closed
Friday 6 <sup>th</sup> May	Sun Safety Day
Monday 23 <sup>rd</sup> May	INSET day 4: School is closed to children for staff training
Week beginning 23 <sup>rd</sup> May	Queen's Platinum Jubilee Celebrations
<b><u>Summer Term 2</u></b>	
Monday 6 <sup>th</sup> June 2022 to Friday 22 <sup>nd</sup> July 2022	
June	Reception children will be assessed using the statutory Early Years Foundation Stage Profile
Week beginning Monday 6 <sup>th</sup> June	Year 1 children will be assessed using the statutory Phonics Screening Check. Year 2 children who did not pass in November will be retested
Monday 4 <sup>th</sup> July	INSET day 5: School is closed to children for staff training
Friday 22 <sup>nd</sup> July	Additional School closure day because of the Queen's Platinum Jubilee. <b>Children will break up for the summer holidays on Thursday 21<sup>st</sup> July</b>
<b><u>Autumn Term 1</u></b>	
Thursday 1 <sup>st</sup> September to Friday 21 <sup>st</sup> October	
Thursday 1 <sup>st</sup> September	INSET day 1: School is closed to children for staff training
Friday 2 <sup>nd</sup> September	Year 1 and Year 2 children return to school Children starting in Nursery and Reception will be given individual start dates
Friday 21 <sup>st</sup> October	INSET day 2: School is closed to children for staff training