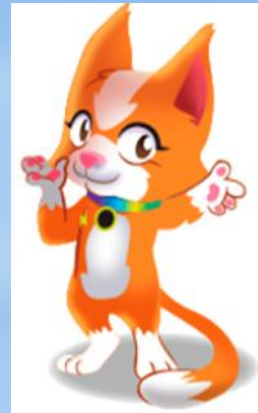


# Welcome to this week's Word Wise Lessons!





Monday

This week we will be learning the spelling rule for adding the suffix ing, ed, er, est, y to words ending in e.



## What is a suffix?

A **suffix** is a group of letters that can be added on to the end of a **root** word to slightly change its meaning.

e.g. **walking**

**Walk** is the root word.

**ing** is the suffix.

Word building

Practise reading  
these nonsense  
words.

My turn ...  
Together  
...  
Your turn  
...

quazz

chelt



beelt



baip



Smooth  
blend



“(off by) heart words”

Common Exception Words.

Which is the tricky  
*bit* in this word?

kind

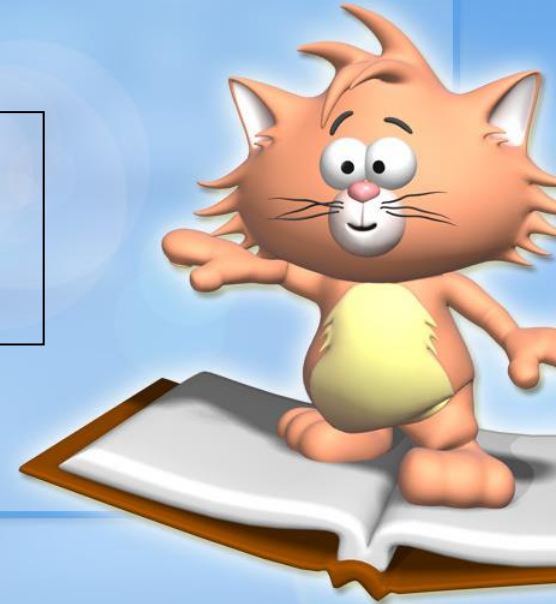
mind

behind

child

childre

n





# Revisit and Revise

“flash words”

sea

seat

bead

only

chief

monkey

Decodable words from a previous teach.

/ee/

Revisit and Revise  
 Practise reading  
 the phase 2 3 and  
 5 graphemes.



# LETTERS AND SOUNDS GRAPHEME CHART



**PHASES 2-3**

s	t	p	n	m	d	g	c	r	b	h	f
ss							h / ch			ff	ll
l	j	v	w	x	y	z	qu	th	ch	sh	ng
						ss					
nk	a	e	i	o	u	ai	ee	igh	oa	oo	oo
ar	or	ur	ow	oi	ear	air	ure				
	er										

**PHASES 3-5**

s	t	p	n	m	d	g	c	r	b	h	f
ss / c / ce / sc / se			kn / gn	mb			h / ch / ck / qu / x	wr			ff / ph
l	j	v	w	x	y	z	qu	th	ch	sh	ng
ll / le	g / ge / dge	ve	wh			ss / se / s		tek / s		ck / ck / ck / ck / ck	
nk	a	e	i	o	u	ai	ee	igh	oa	oo	oo
		ea	y	a	o / oar / ow	ay / a-e / ai / ay / ai / elph	ee / e-e / y / ie / ay / e	ie / i / y / ie	oe / o-e / ow / o / ou	u / u	oo / oo / oo-e / oo / oo / oo
ar	or	ur	ow	oi	ear	air	ure	zh			
a	aw / as / our / oi / ough	er / ir / or ear	ou	oy	ere / eer	are / are / ear	our	ure / ure / uall / ge			





# Spelling

Today, we are learning how to adding the suffix 'ed' to words ending in e.



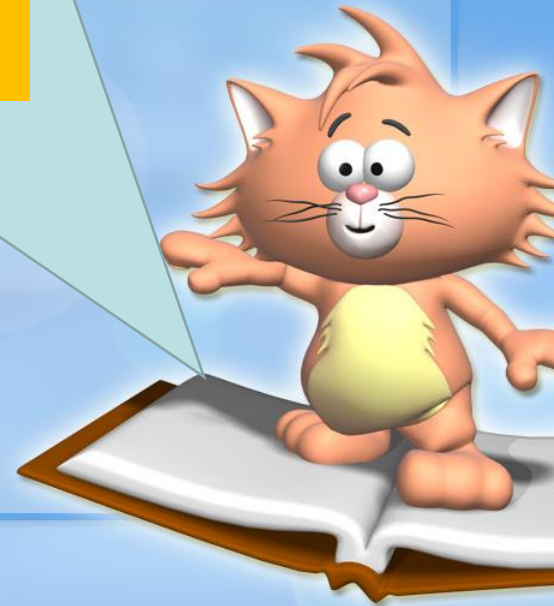
Today's  
learning is....

**Say it!**

**Look at it.**

**Say it to the  
window, the door,  
the floor.  
Look at it.**

ed



When we change words ending in **e** to the past tense, we take away the **e** and add **-ed**.

score

tie

joke



When we change words ending in **e** to the past tense, we take away the **e** and add **-ed**.

scor

ti

jok



When you add **-ed** to a word that ends in **e**, the **-ed** suffix makes the /d/ or /t/ sound.

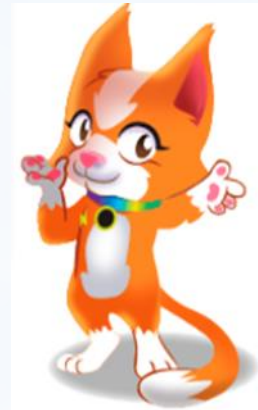
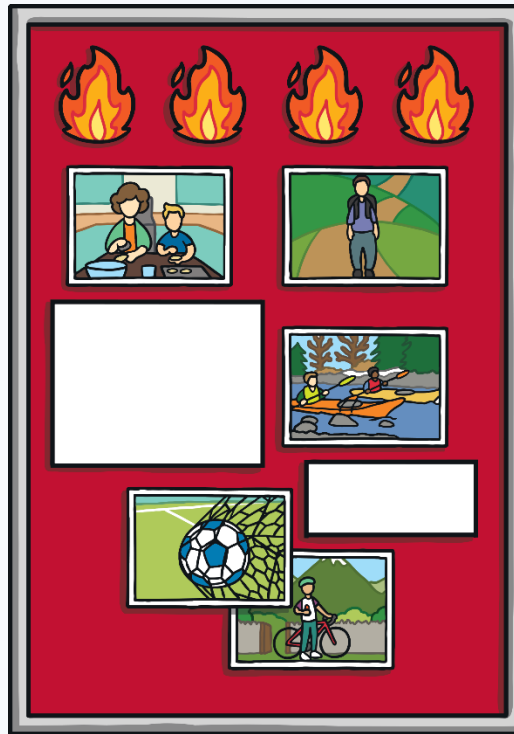
score**d**

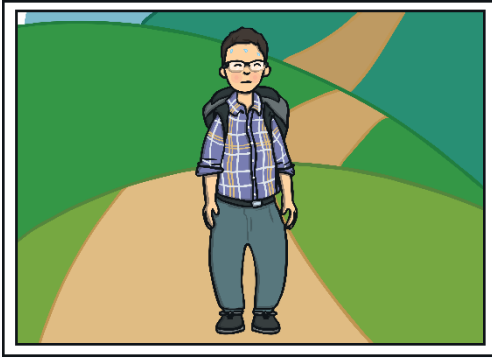
tie**d**

joke**d**

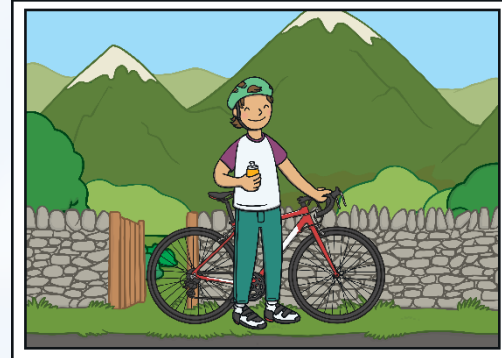


Sparks is looking at photos.  
Can you help her to read the words with the **-ed** suffix?





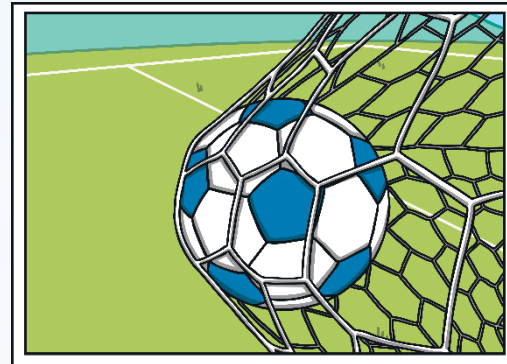
hiked



biked



baked



scored

# Hero Races

Ash and Dexter's friends are taking part in the races.

Can you read the **-ed** words they pass and click on the correct root word?



move

moved

mole

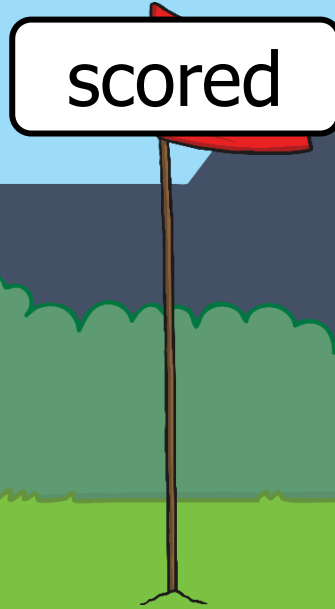




scare

scored

score



cary

cared

care



bake

baked

back



race

raced

rang

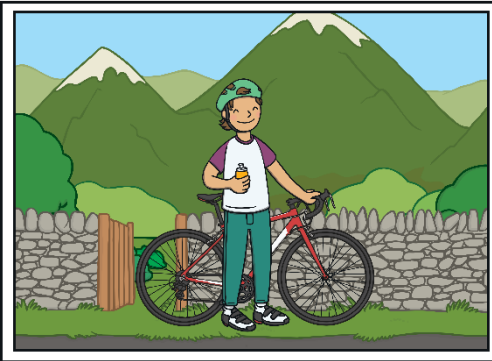


# Text Detectives

Ash and Dexter see a newspaper article on the board. Can you spot all of the **-ed** words?



# Local Heroes



**Community comes together to raise money for charity.**

**Members of the community challenge themselves to raise money for search and rescue teams.**

- One family **baked** over one hundred cakes to sell.
- Firefighters **hiked** for three days.
- School staff **braved** the elements and **raced** canoes on a very cold day.

Check



baked  
behaved  
cared  
closed  
danced  
hated  
liked  
loved  
raised  
saved  
served  
smiled  
taped  
used



Can you read these words. I will then say a word can you write it down scrunch it up into a snowball and aim it at the door!



Can you write some interesting sentences using these words.

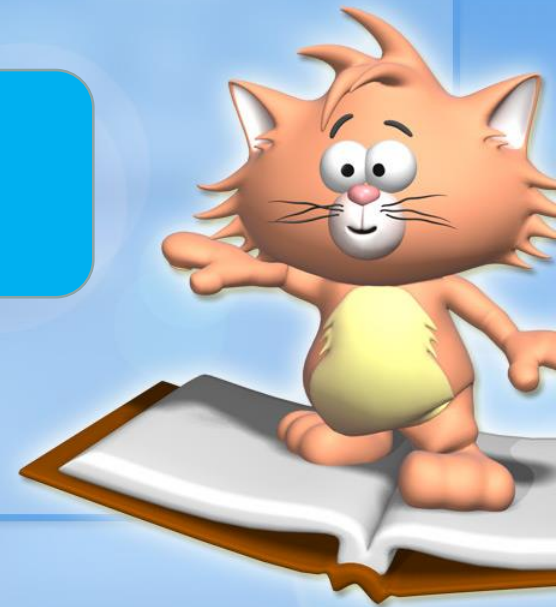
scored

baked

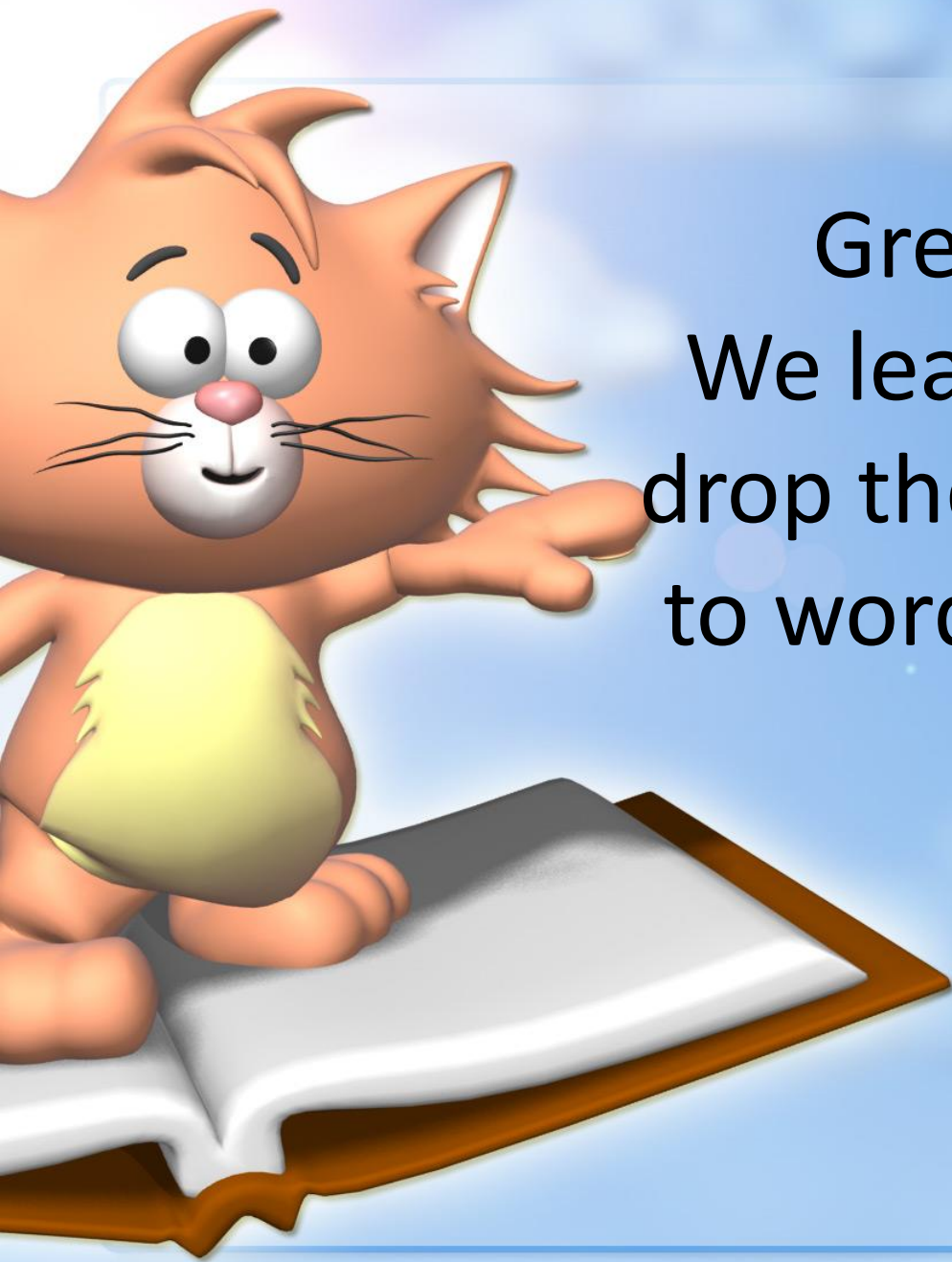
cared

used

Can you use because, and, so, but, in your sentence.

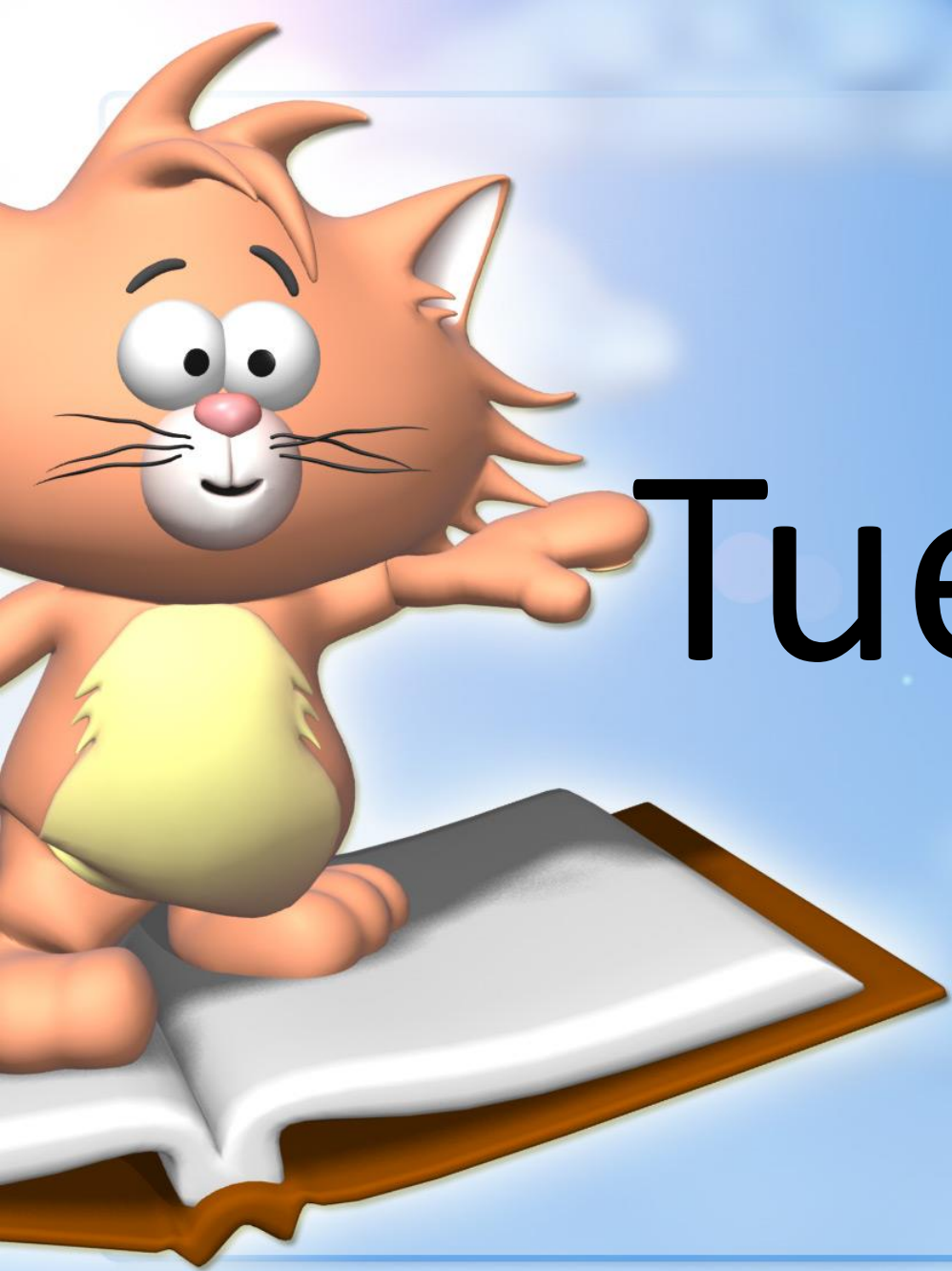






Great job today.  
We learnt that we just  
drop the 'e' and add 'ed'  
to words ending in a 'e'





Tuesday

Word building

Practise reading  
these words.

My turn ...  
Together  
...  
Your turn  
...



gutch

blard



choid



stird



Smooth  
blend



“(off by) heart words”

Common Exception Words.

Which is the tricky  
*bit* in this word?

kind

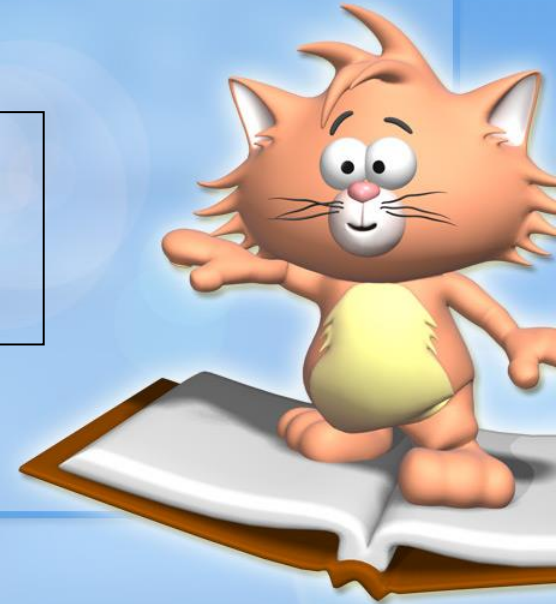
mind

behind

child

childre

n





# Revisit and Revise

“flash words”

cared

loved

baked

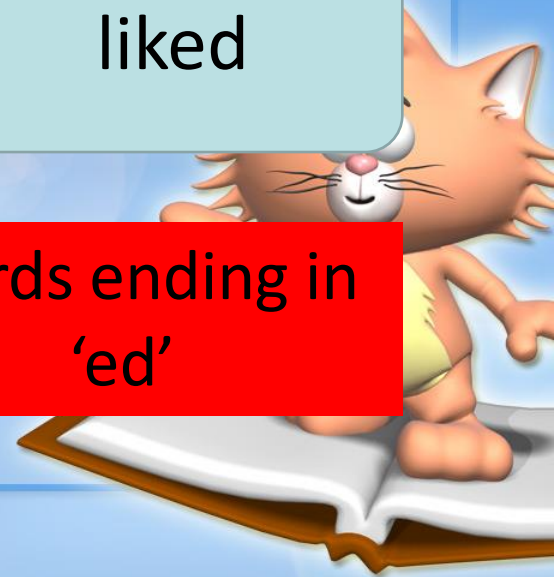
scored

used

liked

Decodable words from a previous teach.

Words ending in  
'ed'



Revisit and Revise  
 Practise reading  
 the phase 2 3 and  
 5 graphemes.



# LETTERS AND SOUNDS GRAPHEME CHART



**PHASES 2-3**

s	t	p	n	m	d	g	c	r	b	h	f
ss							h / ck			ff	ll
l	j	v	w	x	y	z	qu	th	ch	sh	ng
						ss					
nk	a	e	i	o	u	ai	ee	igh	oa	oo	oo
ar	or	ur	ow	oi	ear	air	ure				
	er										

**PHASES 3-5**

s	t	p	n	m	d	g	c	r	b	h	f
ss / c / ce / ac / ce			kn / gn	mb			h / ck / ch / qu / x	wr			ff / ph
l	j	v	w	x	y	z	qu	th	ch	sh	ng
ll / le	g / ge / dge	ve	wh			ss / se / s		tek / s		ck / ck / ck / ck / ck	
nk	a	e	i	o	u	ai	ee	igh	oa	oo	oo
		ss	g	a	u / ur / ow	ay / a-e / ai / ay / ai / elgh	ss / se / y / se / ay / e	l-e / l / y le	ss / o-e / aw / o / ou	ss	ss / se / se- / ss / ck / ss
ar	or	ur	ow	oi	ear	air	ure	zh			
a	aw / as / our / oi / ough	ur / ir / or ear	ou	oy	ere / eer	are / are / ear	our	sure / sion / saul / ge			





# Spelling

Today, we are  
learning to add **-er**  
to words ending in **e**.

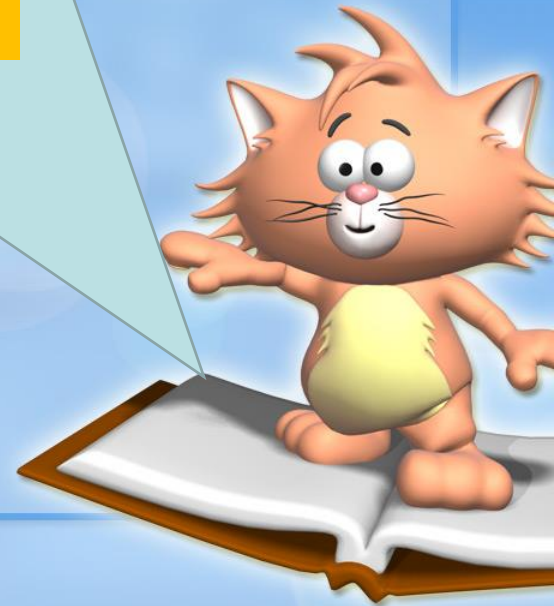
Today's  
learning is....

**Say it!**

**Look at it.**

**Say it to the  
window, the door,  
the floor.  
Look at it.**

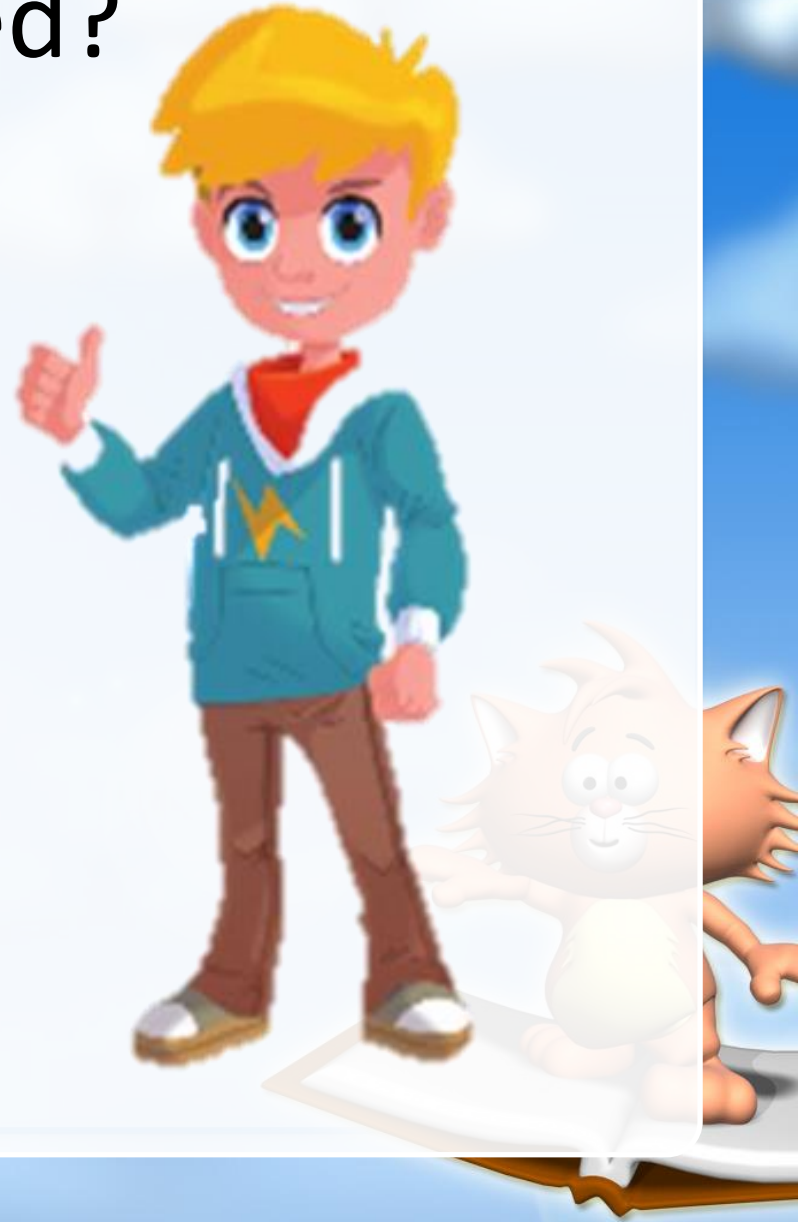
er





# -ed or -ied?

All the words have the -ed suffix. Can you help to work out which is the correct spelling?



When adding **-er** to words ending in **e**, we first must take away the **e** and add **-er**.

hiker

baker

racer



Adding **-er** to an adjective makes the adjective **more**.

wide

wider

brave

braver



Sometimes, adding **-er** to a word changes the meaning of the word

The baker likes to bake.



# Team Flags

Ash and Dexter's friends are looking at the team stations set up. Can you help them read the team names on the flags?

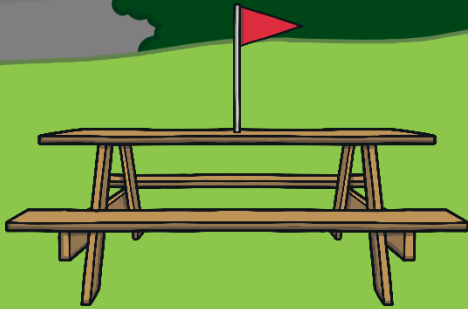


# Team Flags

Kit and Sam are looking at the team stations set up. Can you help them read the team names on the flags?



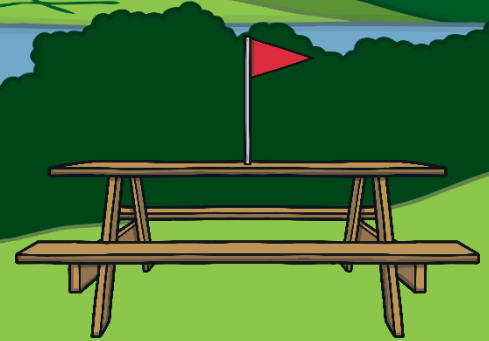
Biker  
Team



Next



Timer  
Team



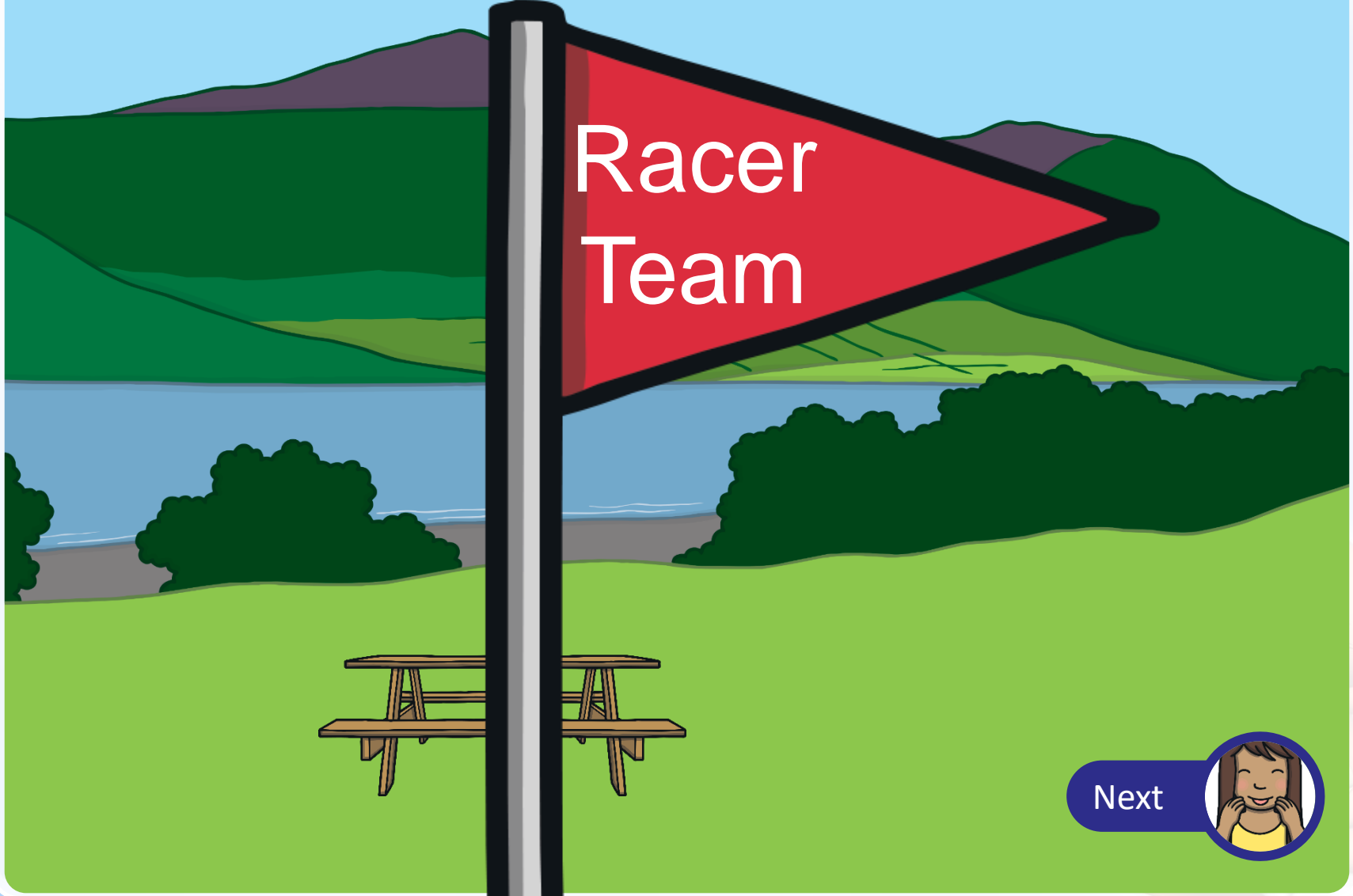
Next



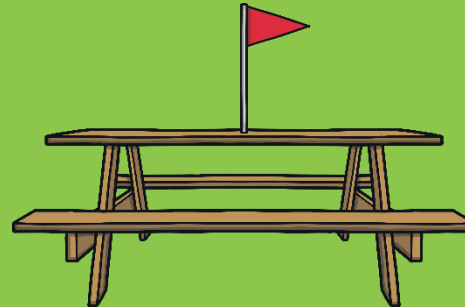


Racer  
Team

Next



Hiker  
Team



Next

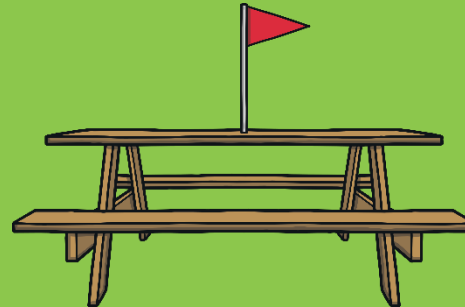


Scorer  
Team

Next



Hiker  
Team

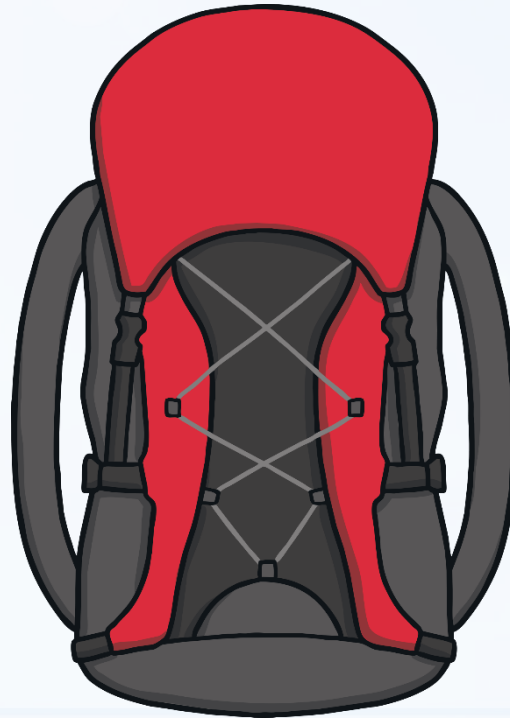


Next



# Backpack Muddle

Ash and Dexter's are looking at the backpacks at the starting point. Unscramble the muddled letters to make an **-er** word to match the picture.





miter

timer



Help



Show



b k r e a



baker



Help



Show



k b r i e



biker



Help



Show







h r e i k

hiker



Help



Show



# Error Checkers

Kit and Sam are looking at the charity challenge poster.  
Can you spot the misspelt words and correct them?

Proofreading is an important skill. Encourage  
your children to proofread their own or a  
friend's work.



Click me for Kit's teaching tips!



Are you a **hiker**?

Maybe you are good  
with **time**?

Are you **braver** than  
your friends?

Could you be the **joker**  
of the group?

Whatever you do, you  
can make a difference –  
give it a go!

Check



## Rule

### Words Ending in 'e' (drop the 'e' and add -est)

bravest  
crudest  
cutest  
finest  
hugest  
largest  
latest  
nicest  
rudest  
safest  
simplest  
widest



Can you read these words. I will then say a word can you write it down scrunch it up into a snowball and aim it at the door!



Can you write some interesting sentences using these words.

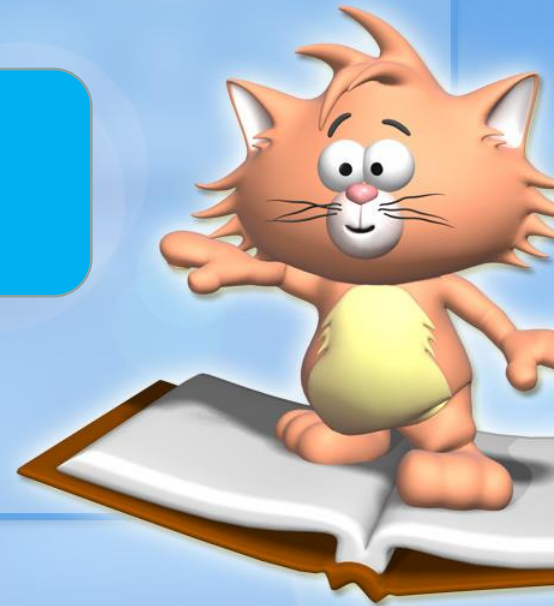
largest

bravest

cutest

safest

Can you use because, and, so, but, in your sentence.





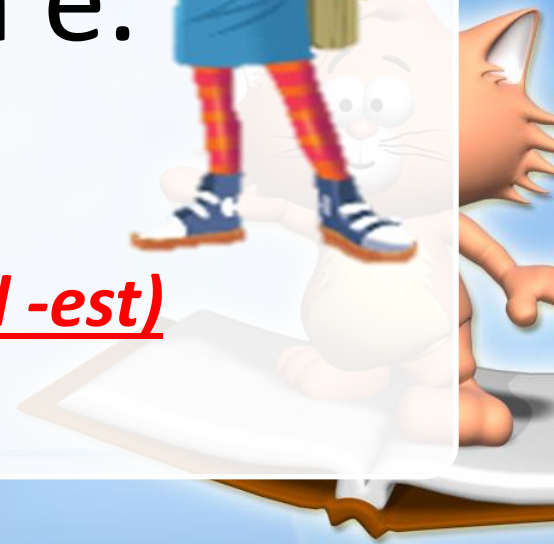
Today, we have  
learnt to add the

**-er suffix**

to words ending in e.

Remember the rule:

Words Ending in 'e' (drop the 'e' and add -est)





Wednesda

y

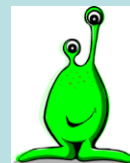
# Practise reading these nonsense words.

My turn ...  
Together  
...  
Your turn  
...

moot



nairs

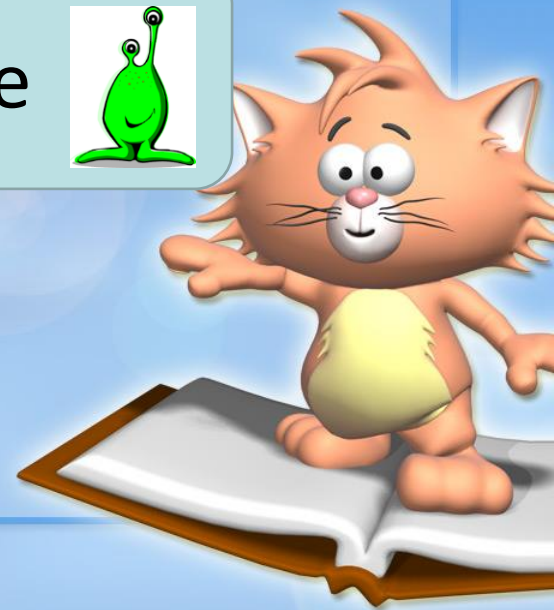


kay

shabe



Smooth  
blend





“(off by) heart words”

Common Exception Words.

Which is the tricky  
*bit* in this word?

kind

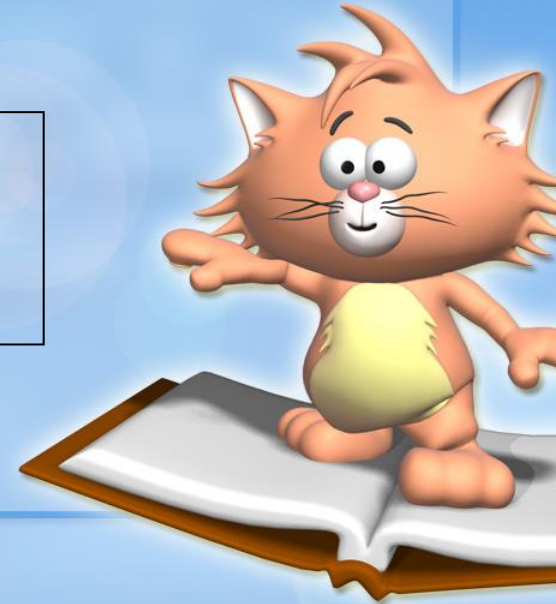
mind

behind

child

childre

n



Revisit and Revise  
 Practise reading  
 the phase 2 3 and  
 5 graphemes.



# LETTERS AND SOUNDS GRAPHEME CHART



**PHASES 2-3**

s	t	p	n	m	d	g	c	r	b	h	f
ss							h / ch			ff	ll
l	j	v	w	x	y	z	qu	th	ch	sh	ng
						ss					
nk	a	e	i	o	u	ai	ee	igh	oa	oo	oo
ar	or	ur	ow	oi	ear	air	ure				
	er										

**PHASES 3-5**

s	t	p	n	m	d	g	c	r	b	h	f
ss / c / ce / sc / se			kn / gn	mb			h / ch / ck / qu / x	wr			ff / ph
l	j	v	w	x	y	z	qu	th	ch	sh	ng
ll / le	g / ge / dge	ve	wh			ss / se / s		tek / s		ck / ck / ck / ck / ck	
nk	a	e	i	o	u	ai	ee	igh	oa	oo	oo
		ss	g	a	u / ur / ur	ay / a-e / ai / ay / ai / elph	ss / s-e / y	l-e / l / y le	ss / s-e / ss / s / ss	ss	ss / ss / ss- / ss / ss / ss
ar	or	ur	ow	oi	ear	air	ure	zh			
a	aw / as / our / oi / ough	ur / ir / or ear	ou	oy	ere / eer	are / are / ear	our	sure / sion / soul / ge			





# Revisit and Revise

“flash words”

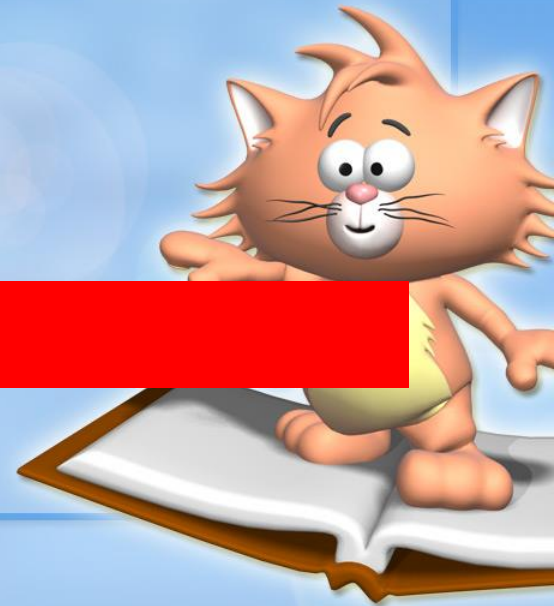
biker

baker

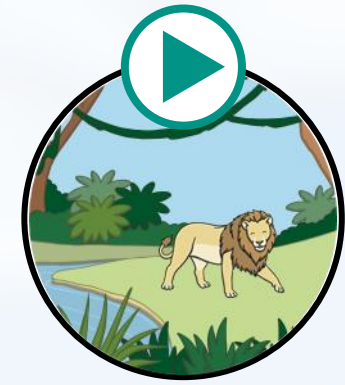
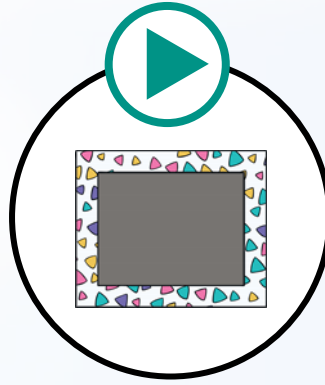
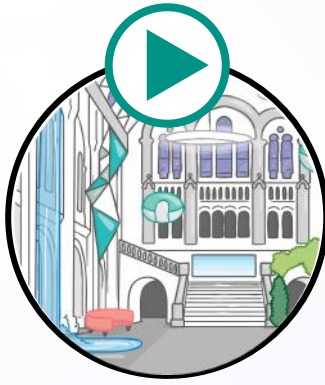
timer

racer

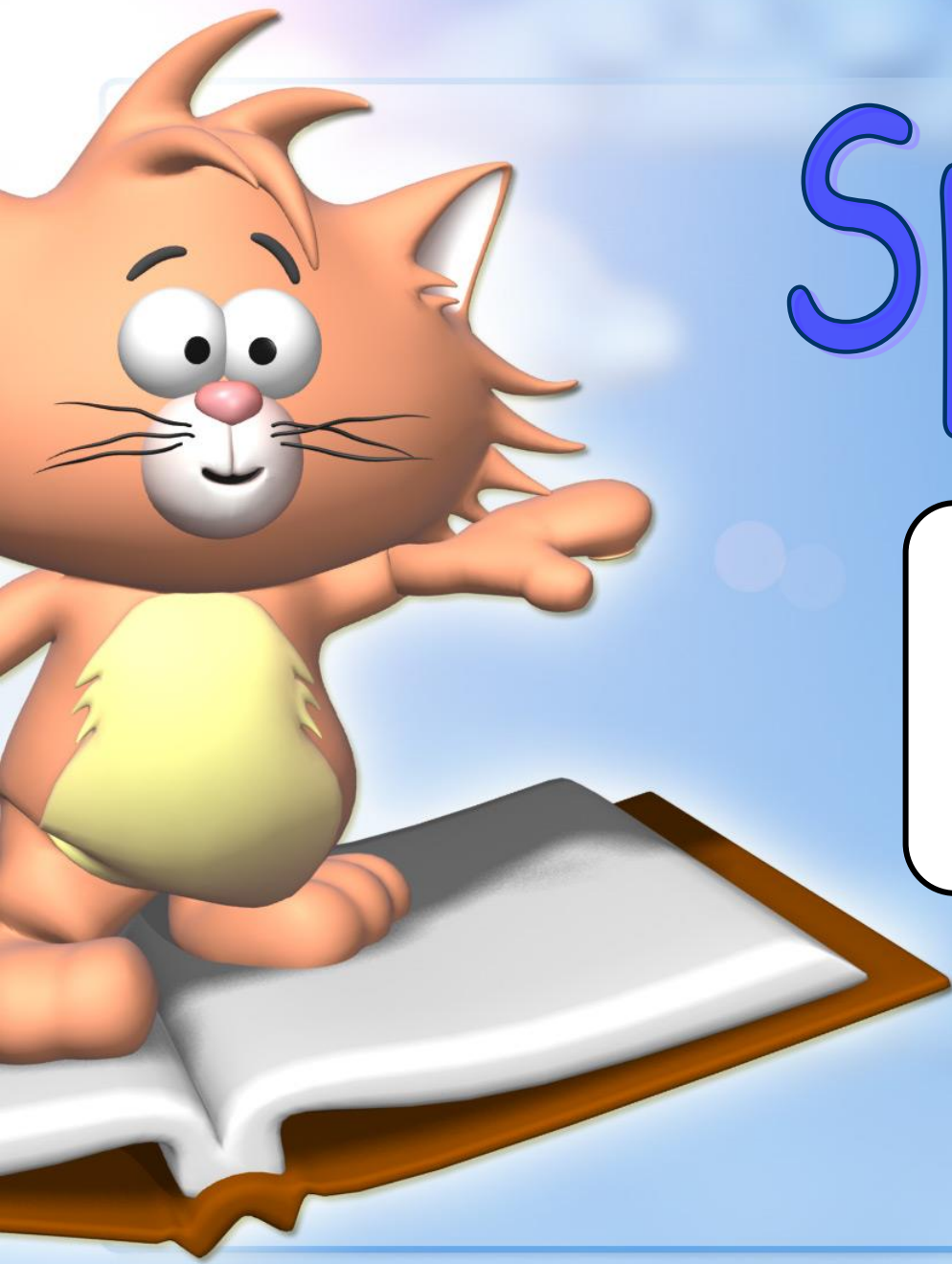
Decodable words from a previous teach.



# Revisit and Review



I'll say them and you write them down!



# Spelling

Today, we are learning to  
add **-est** to words ending  
in **e**.

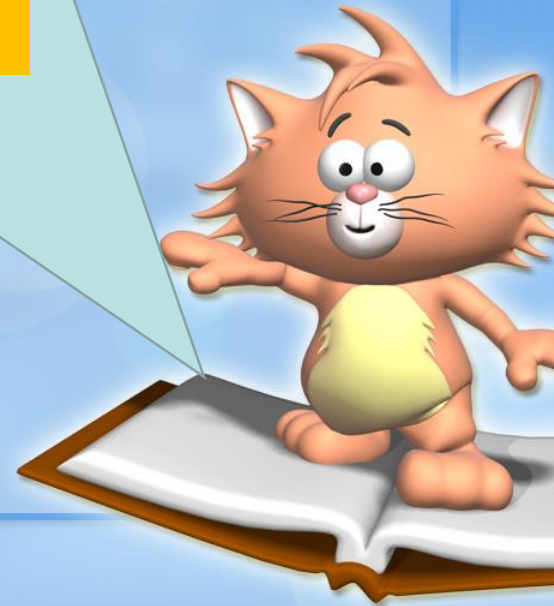
Today's  
learning is....

**Say it!**

**Look at it.**

**Say it to the  
window, the door,  
the floor.  
Look at it.**

**est**



When adding **-est** to words ending in **e**, the **e** should be removed.  
For example:

**nice**

**nicest**

**brave**

**bravest**

**fine**

**finest**



Sparks is tidying up her T-shirts and adding them to the washing pile. Can you read the **-est** words on them?







# The Largest Toy Box

Flo has the largest toy box in her room and one of her word puzzles has fallen out. Help her to find the missing pieces.



i t s n c e

The boy picked the nicest coat  
to wear to a party.

i t s n c e

The boy picked the n icest coat  
to wear to a party.

r t a b v e s

The bravest knight won the  
battle.

r e g l a t s

Inside the largest was a  
huge gift.

# Text Detectives!

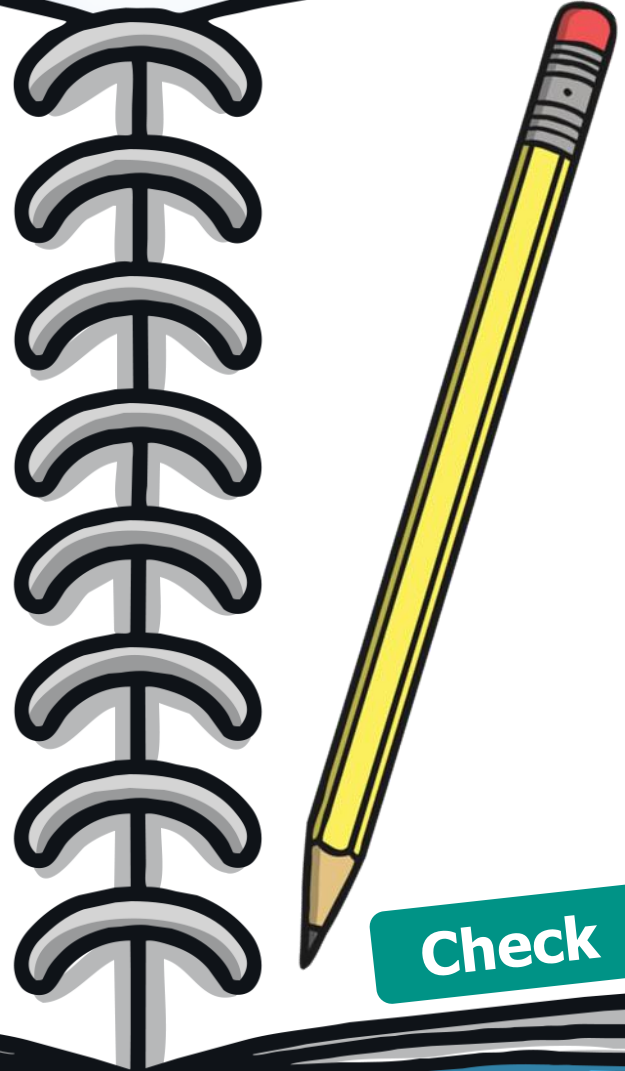
Ash found his diary entry from when Jay came to visit. Can you spot any words ending in **e** with **-est** added to them?



Dear diary,

Today, the **nicest** alien I have ever met came to visit. He is called Jay. We talked to him lots. He lives on the **largest** planet in his solar system, which is **closest** to the next galaxy. He was the **bravest** alien when he came to school with us. Life on earth is very different to his own planet!

Love  
Sam



Check



**RULE: Words Ending in 'e' (drop the 'e' and add -est)**

bravest  
crudest  
cutest  
finest  
hugest  
largest  
latest  
nicest  
rudest  
safest  
simplest  
widest



Can you read these words. I will then say a word can you write it down scrunch it up into a snowball and aim it at the door!



Your task:

Have a go at applying this spelling rule to the following words:

1. brave → \_\_\_\_\_

4. rude → \_\_\_\_\_

2. wide → \_\_\_\_\_

5. simple → \_\_\_\_\_

3. nice → \_\_\_\_\_

6. white → \_\_\_\_\_



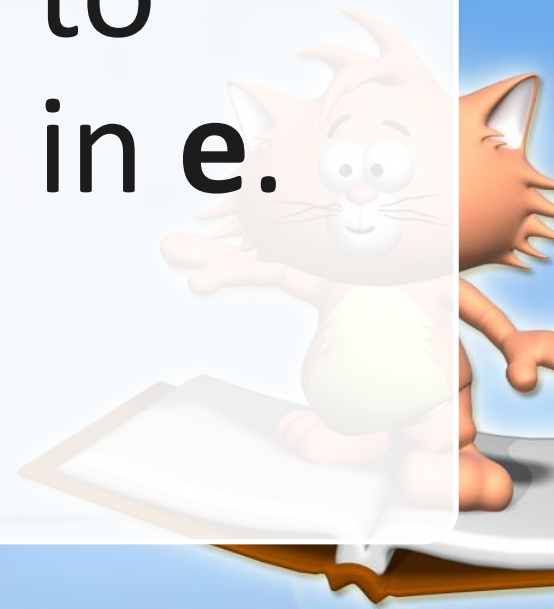
Now that you have changed the words, put each one into a sentence.

Challenge: Can you think of any other words that follow this rule?

Write them down in your book.



Today, we have  
learnt  
to add **-est** to  
words ending in **e**.





Thursday

# Practise reading these words.

My turn ...  
Together  
...  
Your turn  
...

weef



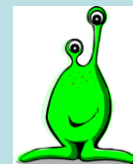
baip



figh



soam



Smooth  
blend



“(off by) heart words”

Common Exception Words.

Which is the tricky  
*bit* in this word?

kind

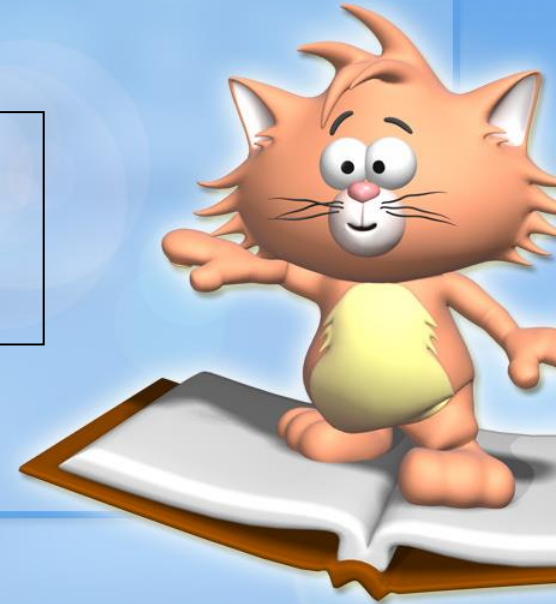
mind

behind

child

childre

n



Revisit and Revise  
 Practise reading  
 the phase 2 3 and  
 5 graphemes.



# LETTERS AND SOUNDS GRAPHEME CHART



**PHASES 2-3**

s	t	p	n	m	d	g	c	r	b	h	f
ss							h / ch			ff	ll
l	j	v	w	x	y	z	qu	th	ch	sh	ng
						ss					
nk	a	e	i	o	u	ai	ee	igh	oa	oo	oo
ar	or	ur	ow	oi	ear	air	ure				
	er										

**PHASES 3-5**

s	t	p	n	m	d	g	c	r	b	h	f
ss / c / ce / sc / se			kn / gn	mb			h / ch / ck / qu / x	wr			ff / ph
l	j	v	w	x	y	z	qu	th	ch	sh	ng
ll / le	g / ge / dge	ve	wh			ss / se / s		tek / s		ck / ck / ck / ck / ck	
nk	a	e	i	o	u	ai	ee	igh	oa	oo	oo
		ss	g	a	u / ur / ow	ay / a-e / ai / ay / ai / elgh	ss / ee / y / se / ag / e	l-e / l / y le	ss / o-e / ss / o / ou	ss	ss / ee / ee- / ss / ck / ss
ar	or	ur	ow	oi	ear	air	ure	zh			
a	aw / as / our / oi / ough	er / ir / or ear	ou	oy	ere / eer	are / are / ear	our	sure / sion / soul / ge			



## Revisit and Review

Let's practise reading some of this week's focus words.

**Unpleasant**





Now, let's write them with the magic pencil.

b r a v e s t

Play



Now, let's write them with the magic pencil.

finest

Play





# Spelling

Today, we are learning to add  
-y to words ending in e.

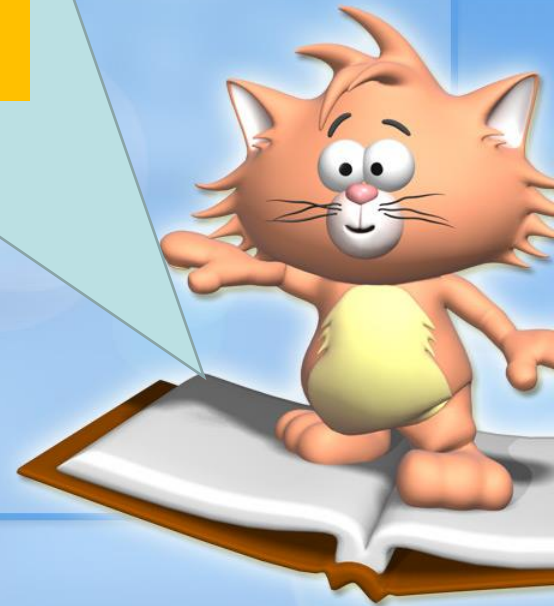
Today's  
learning is....

**Say it!**

**Look at it.**

**Say it to the  
window, the door,  
the floor.  
Look at it.**

**y**



When adding **-y** to words ending in **e**, the **e** should first be removed.  
For example:

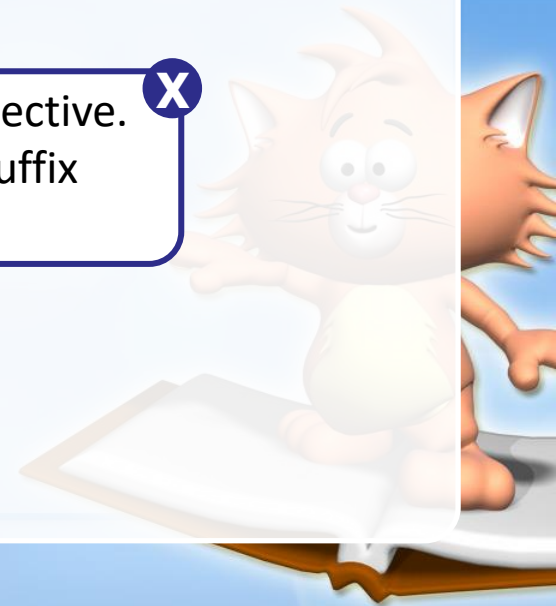
shin~~e~~

sparkl~~e~~

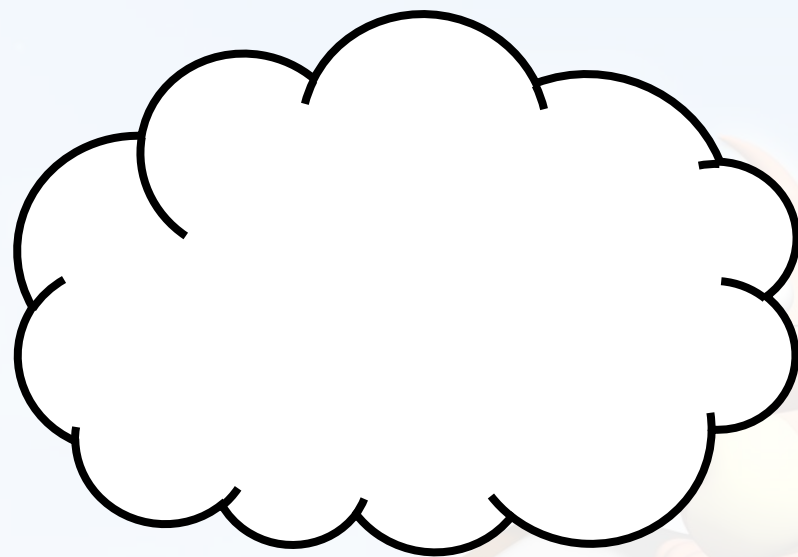
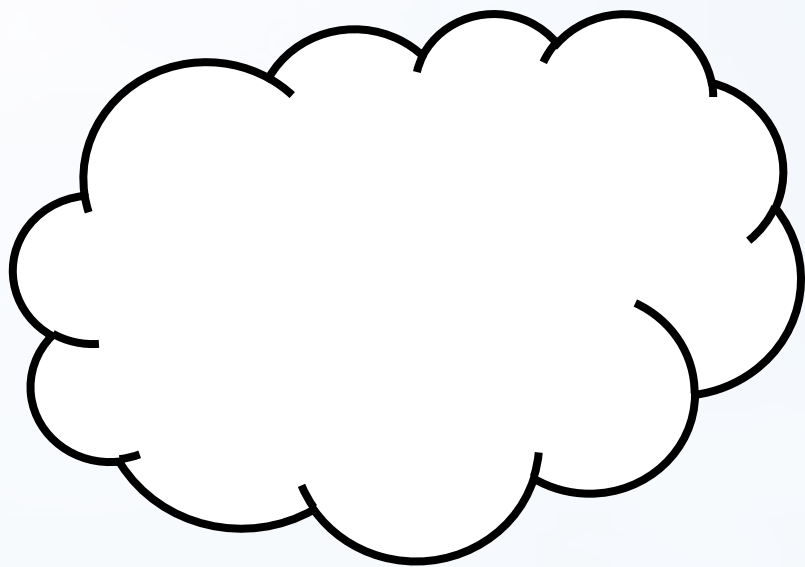
Adding the suffix **-y** to a noun or verb creates an adjective. X  
For example, 'bone' is a noun but adding the **-y** suffix creates 'bony', which is an adjective.

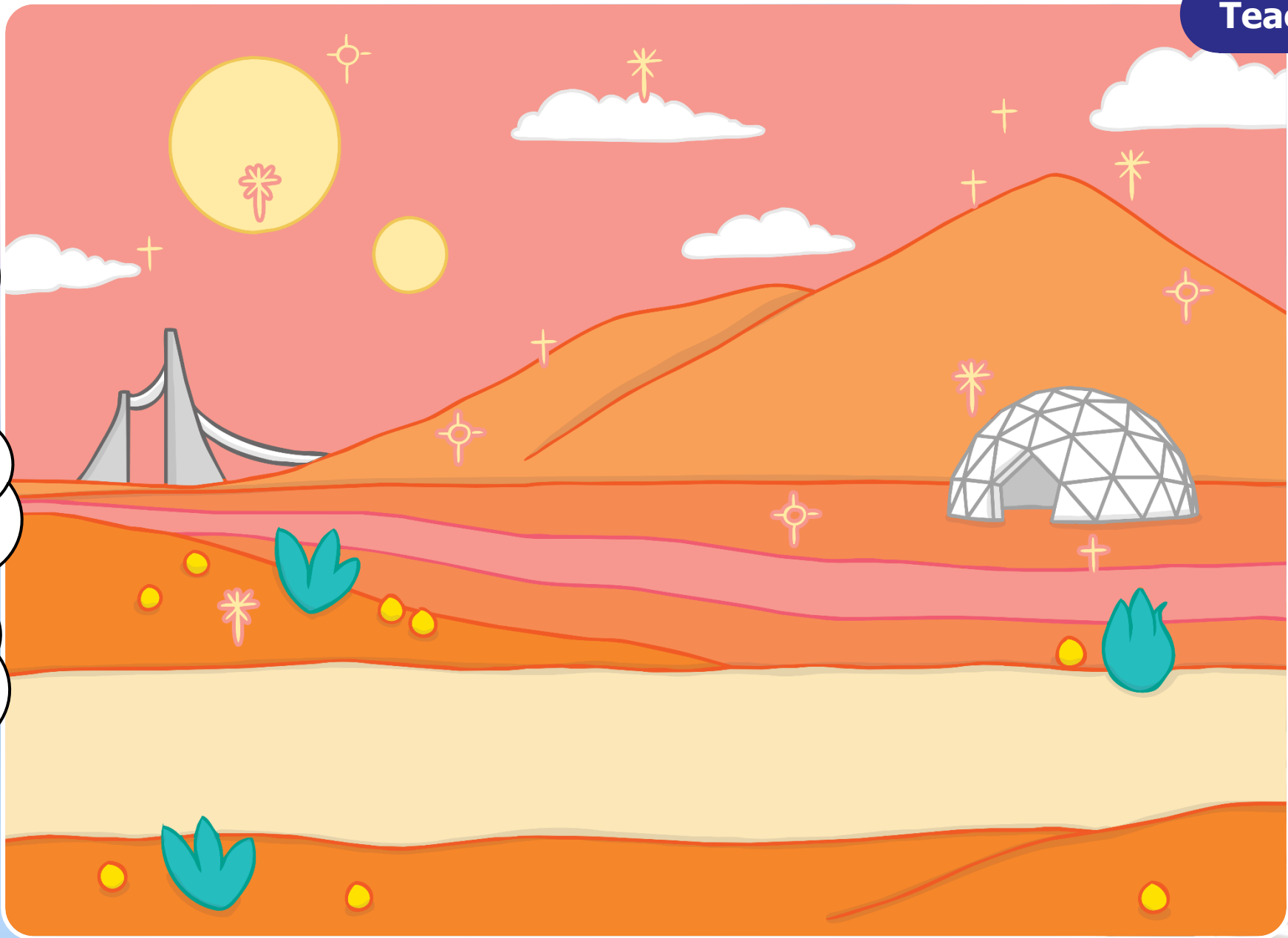


Click me for Kit's teaching tips!



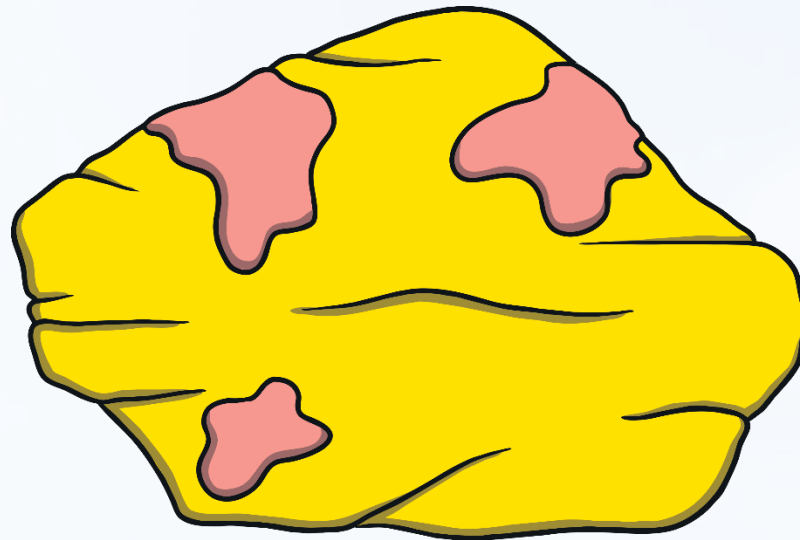
Can you read the **-y** words on the alien clouds as Kit and Sam are walking? Click on the slide to begin.





# Alien Planet Rocks

Flo and Asrid stop to look at some of the alien rocks. They look like they have **-y** words written on them but some of the letters are missing. Can you help Kit and Sam to work out what they say?







i

y

e

ee





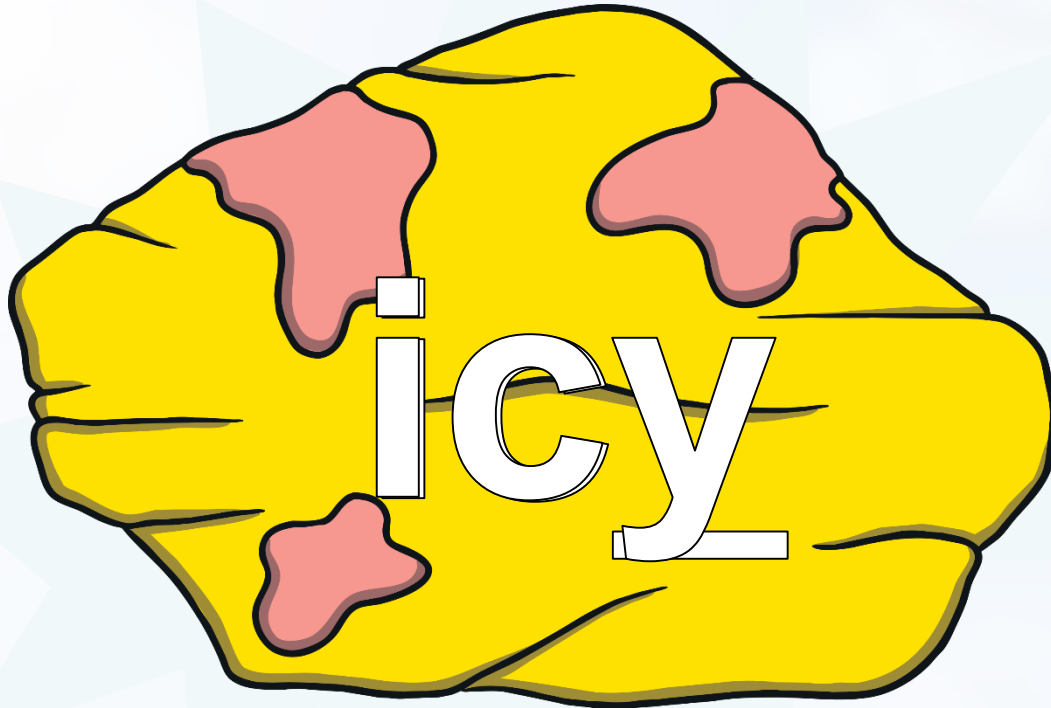
e

i

ee

y



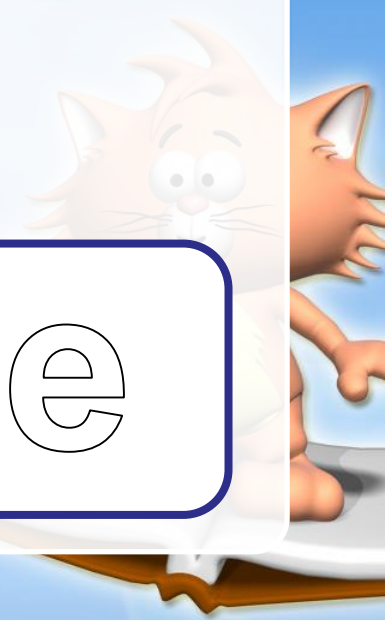


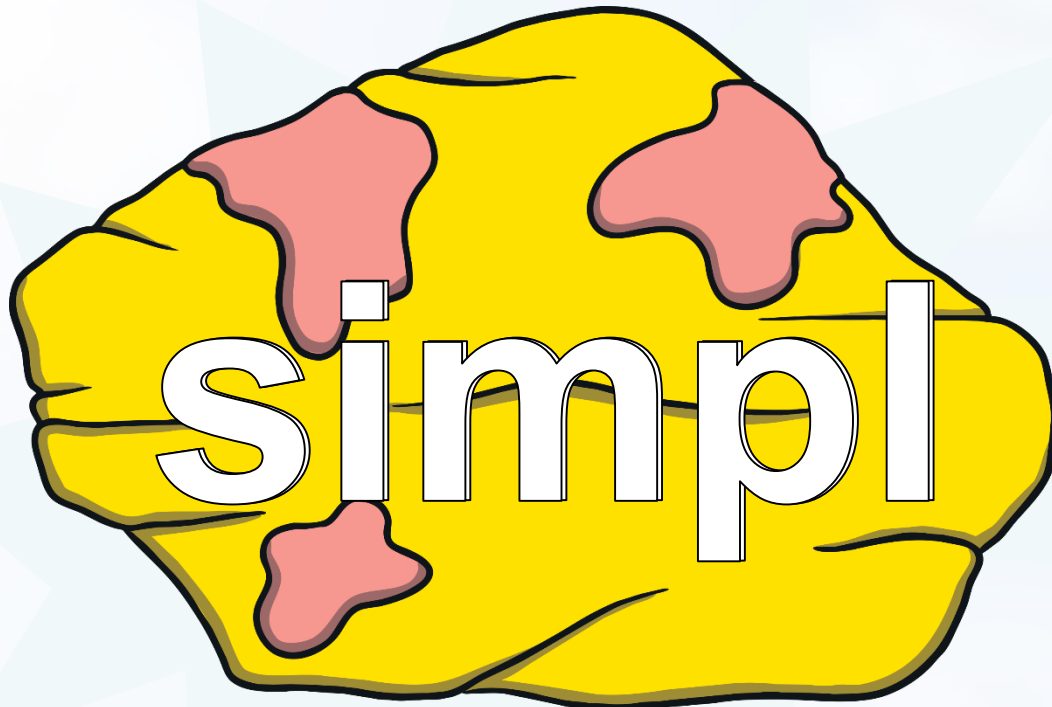
y

ee

i

e



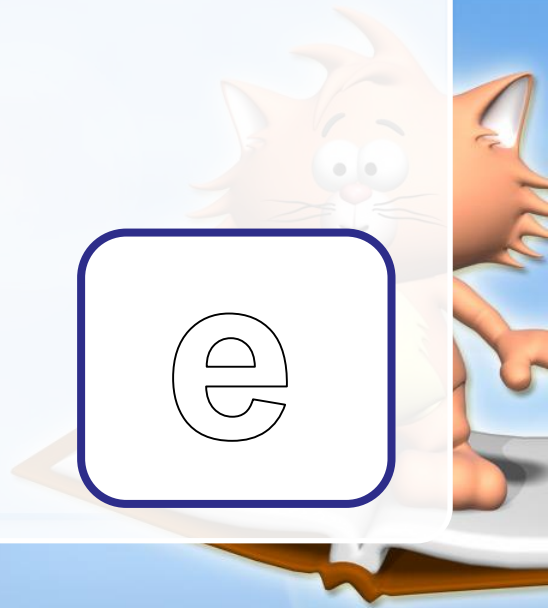
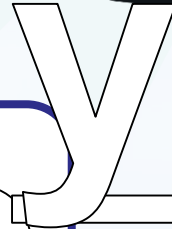


i

ee

y

e



# A Much Needed Rest

Flo and Astrid decide to stop and have a rest. Sam shelters behind a slimy rock and writes in her diary. Help her to check her spelling of **-y** words.



Dear diary,

We have come to visit Jay in his shiny, sparkly house but we did not expect it to be such a difficult journey.

The ground is slimy and the wind is so noisy. We are both tired so we are having a little rest.

Lots of love

Sam

Check



Can you write some interesting sentences using these words.

slimy

shiny

sparkly

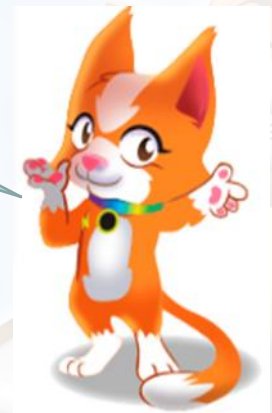
Can you use  
because, and,  
so, but, in  
your  
sentence.



Today, we have learnt to add –  
y to words ending in e.



Remember the  
rule:  
When adding –y  
to words ending in  
e, the e should  
first be removed.







Friday

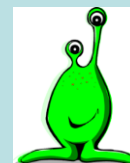
# Practise reading these words.

My turn ...  
Together  
...  
Your turn  
...

cribe



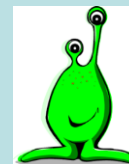
norst



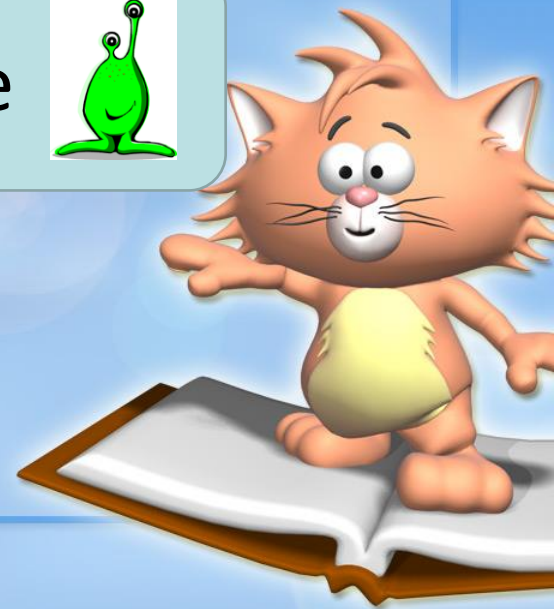
plays



sloke



Smooth  
blend



“(off by) heart words”

Common Exception Words.

Which is the tricky  
*bit* in this word?

kind

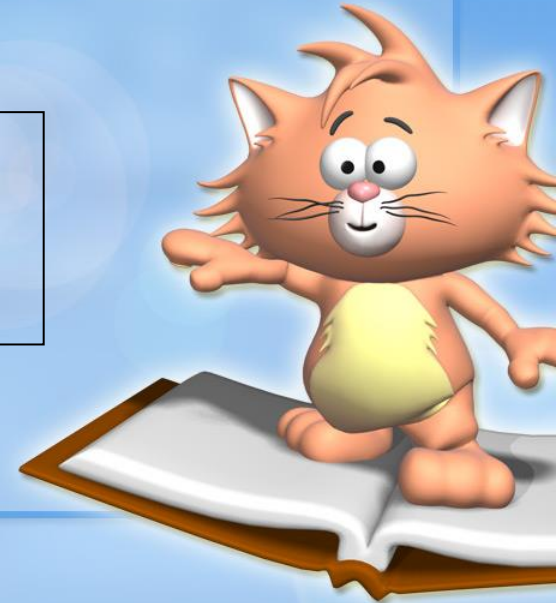
mind

behind

child

childre

n



Revisit and Revise  
 Practise reading  
 the phase 2 3 and  
 5 graphemes.



# LETTERS AND SOUNDS GRAPHEME CHART



**PHASES 2-3**

s	t	p	n	m	d	g	c	r	b	h	f
ss							h / ch			ff	ll
l	j	v	w	x	y	z	qu	th	ch	sh	ng
						ss					
nk	a	e	i	o	u	ai	ee	igh	oa	oo	oo
ar	or	ur	ow	oi	ear	air	ure				
	er										

**PHASES 3-5**

s	t	p	n	m	d	g	c	r	b	h	f
ss / c / ce / ac / ce			kn / gn	mb			h / ch / ck / qu / x	wr			ff / ph
l	j	v	w	x	y	z	qu	th	ch	sh	ng
ll / le	g / ge / dge	ve	wh			ss / ss / s		ck / s		ck / ck / ck / ck / ck	
nk	a	e	i	o	u	ai	ee	igh	oa	oo	oo
		ss	g	a	u / ur / ow	ay / a-e / ai / ay / ai / elph	ss / s-e / y	l-e / l / y le	ss / o-e / ss / o / ou	ss	ss / ss / ss-e / ss / ss / ss
ar	or	ur	ow	oi	ear	air	ure	zh			
a	aw / as / our / oi / ough	er / ir / or ear	ou	oy	ere / eer	are / are / ear	our	sure / sion / soul / ge			





# Spelling

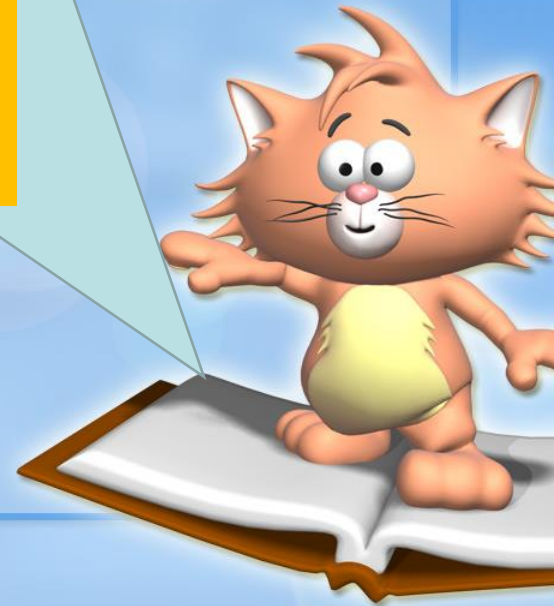
**Adding -ing, -ed, -er, -est  
and -y to words ending in -e  
with a consonant before it**



Today's  
learning is....

ing  
ed  
er  
est  
y

**Say it!**  
**Look at it.**  
**Say it to the**  
**window, the door,**  
**the floor.**  
**Look at it.**



A **root word** is the basic form of a word before any parts are changed or added on. We have seen how root words can be changed by adding different **suffixes** (endings)...

copy

**copier**

marry

**marrying**

baby

**babies**

happy

**happiest**

cry

**cries**



Click on each sentence to see a root word that ends in -e with a consonant before it.

Friends are **nice** to each other.

When my dad cleans his motorbike, he rubs it to get it to **shine**.

The ghost train makes my sister scream, but it doesn't **scare** me!

At the weekends, we put on our walking boots and go for a long **hike**.





We can change words by removing the -e before adding the suffixes -ed, -ing, -er, -est, -y. Look...to change the root word **hike**...

Click on the boxes to change the root word

? = ? = ?

Remove the -e before adding

ed



We can change words by removing the -e before adding the suffixes -ed, -ing, -er, -est, -y. Look...to change the root word **hike**...

Click on the boxes to change the root word

? = ? = ?

Remove the -e before adding

**ing**



We can change words by removing the -e before adding the suffixes -ed, -ing, -er, -est, -y. Look...to change the root word **hike**...

Click on the boxes to change the root word

? = ? = ?

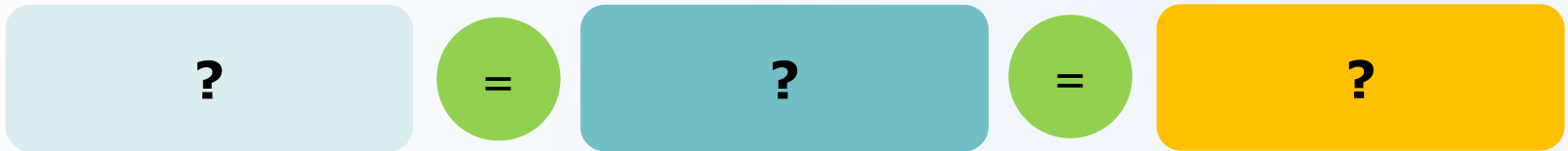
Remove the -e before adding

er



We can change words by removing the -e before adding the suffixes -ed, -ing, -er, -est, -y. Look...to change the root word **nice**...

Click on the boxes to change the root word



Remove the -e before adding

**est**



What is the root word here?



Click on the box to find the root word

?

=

shining

or

shiny

Remove the –e before adding

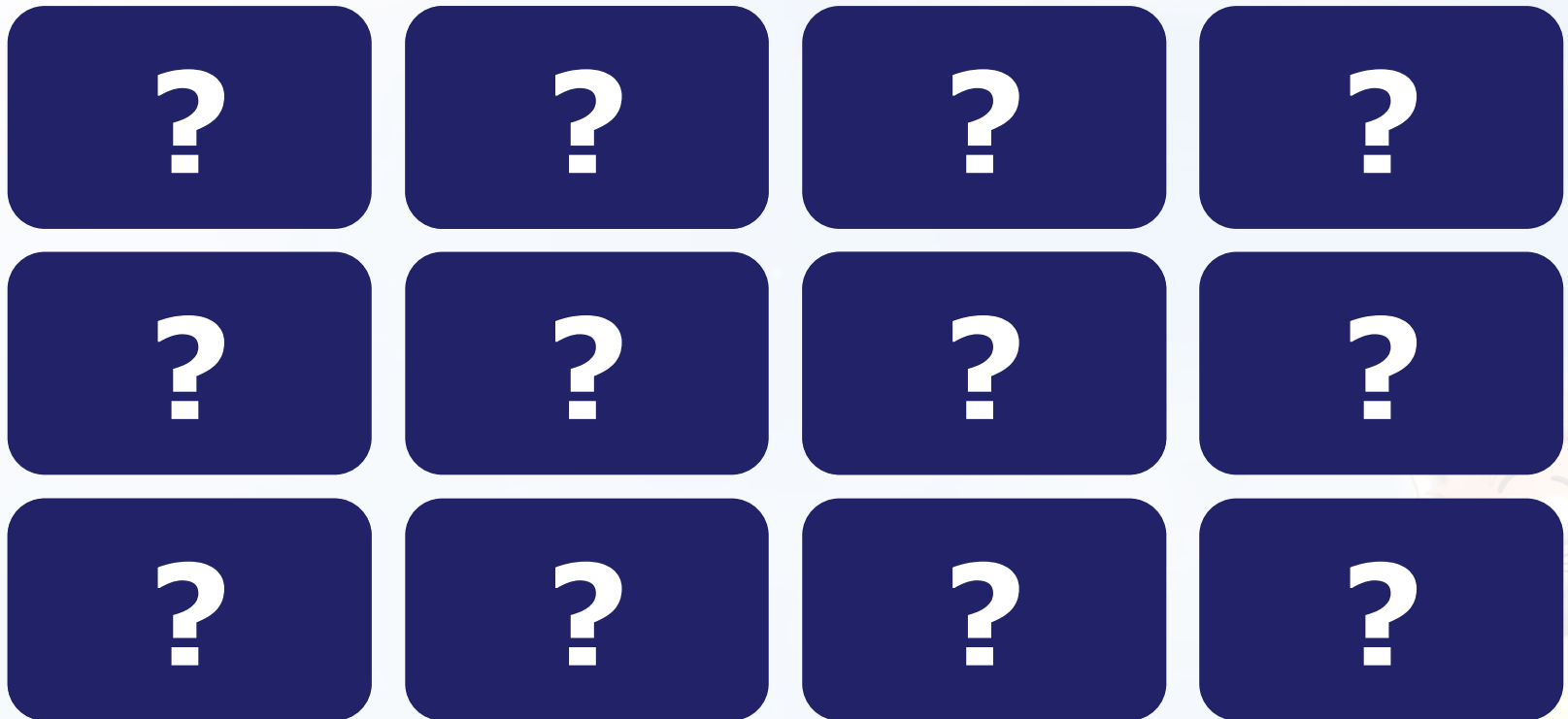
ing

or

y



Split into two teams. Take it in turns to click on **three** cards. If you find a root word and its two matching words with the -ing, -ed, -er, -est or -y endings, score a point for your team. Whichever team has found the most tricky trios at the end of the game is the winner.



(Click the cards again to turn them back over if the words are not all found in that turn.)

Can you read these words?



hiking  
hiked  
hiker  
nicer  
nicest

shiny  
being  
shining  
scary  
scaring



Can you write some interesting sentences using these words.

nicer

scary

shining



Can you use  
because, and,  
so, but, in  
your  
sentence.





# Time for a crossword with your buddy!

Adding -ing, -ed, -er, -est and -y to Words That End in 'e' with a Consonant Before It.

n i c e s t g h s  
s e h i k i n g h  
c h i k e r u n i  
a u k h y u i i n  
r i e g s h i c i  
i o d h h d k e n  
n l b e i n g r g  
g p a s n e r t y  
s c a r y a r y i

hiking	shiny
hiked	being
hiker	shining
nicer	scary
nicest	scaring

If you have finished  
can you make your  
own crossword  
using this week's  
suffix?



# Well Done



Next week more suffix rules. We will be adding ing, er, est and y to CVC and CCVC words.

